

Product datasheet for **TA309067**

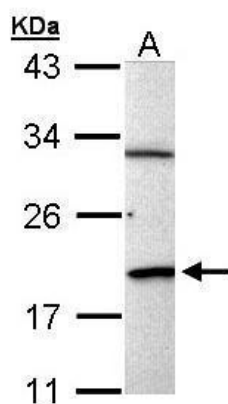
BCL2L15 Rabbit Polyclonal Antibody

Product data:

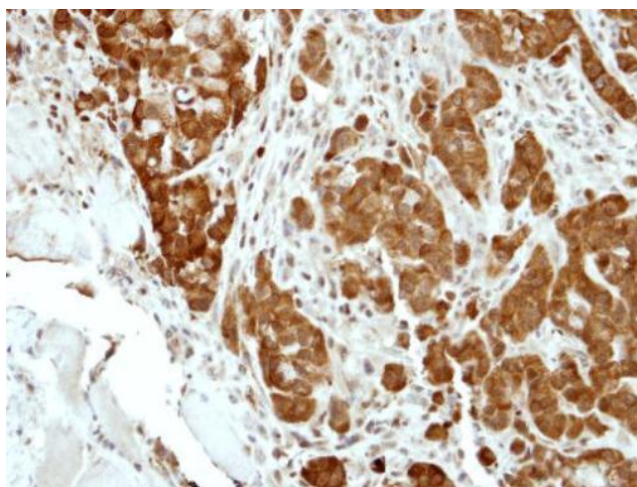
Product Type:	Primary Antibodies
Applications:	IF, IHC, WB
Recommended Dilution:	ICC/IF:1:100-1:1000; IHC:1:100-1:1000; WB:1:500-1:3000
Reactivity:	Human
Host:	Rabbit
Isotype:	IgG
Clonality:	Polyclonal
Immunogen:	Recombinant fragment corresponding to a region within amino acids 1 and 163 of BCL2L15 (Uniprot ID#Q5TBC7)
Formulation:	0.1M Tris, 0.1M Glycine, 10% Glycerol (pH7). 0.01% Thimerosal was added as a preservative.
Concentration:	lot specific
Purification:	Purified by antigen-affinity chromatography.
Conjugation:	Unconjugated
Storage:	Store at -20°C as received.
Stability:	Stable for 12 months from date of receipt.
Predicted Protein Size:	18 kDa
Gene Name:	BCL2 like 15
Database Link:	NP_001010922 Entrez Gene 440603 Human Q5TBC7
Synonyms:	Bfk; C1orf178



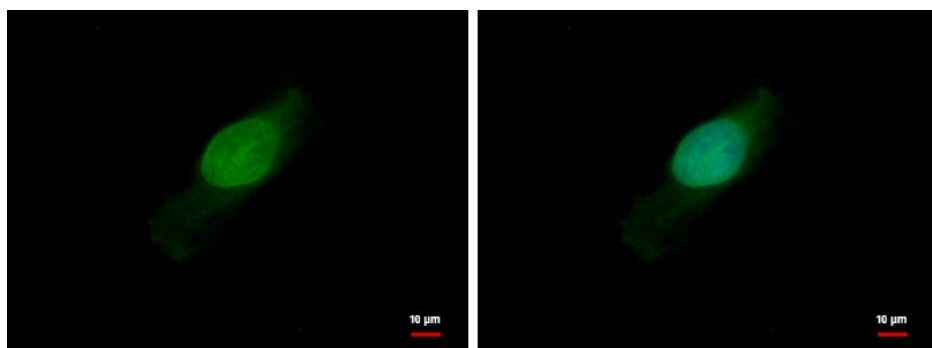
[View online »](#)

Product images:

Sample (30 ug of whole cell lysate). A: Raji. 12% SDS PAGE. TA309067 diluted at 1:1000.



Immunohistochemical analysis of paraffin-embedded A549 xenograft, using BCL2L15 (TA309067) antibody at 1:500 dilution.



BCL2L15 antibody detects BCL2L15 protein at nucleus by immunofluorescent analysis. Sample: HeLa cells were fixed in ice-cold MeOH for 5 min. Green: BCL2L15 protein stained by BCL2L15 antibody (TA309067) diluted at 1:500. Blue: Hoechst 33342 staining.