

Product datasheet for **TA309065**

TUBB8 Rabbit Polyclonal Antibody

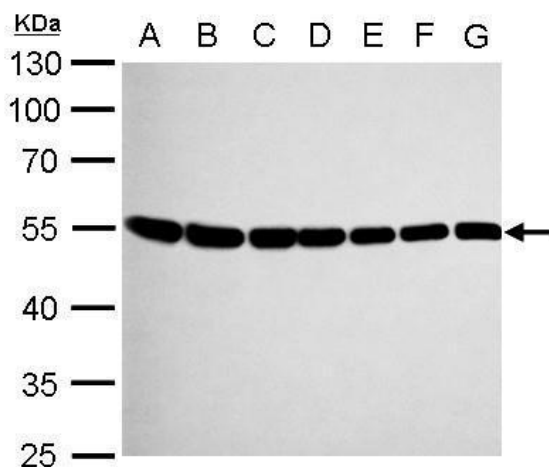
Product data:

Product Type:	Primary Antibodies
Applications:	IF, IHC, IP, WB
Recommended Dilution:	ICC/IF:1:100-1:1000; IHC:1:100-1:1000; WB:1:500-1:3000
Reactivity:	Human
Host:	Rabbit
Isotype:	IgG
Clonality:	Polyclonal
Immunogen:	Synthetic peptide corresponding to a region within amino acids 366 and 444 of beta Tubulin 8 (Uniprot ID#Q3ZCM7)
Formulation:	0.1M Tris, 0.1M Glycine, 10% Glycerol (pH7). 0.01% Thimerosal was added as a preservative.
Concentration:	lot specific
Purification:	Purified by antigen-affinity chromatography.
Conjugation:	Unconjugated
Storage:	Store at -20°C as received.
Stability:	Stable for 12 months from date of receipt.
Predicted Protein Size:	50 kDa
Gene Name:	tubulin beta 8 class VIII
Database Link:	NP_817124 Entrez Gene 347688 Human Q3ZCM7
Synonyms:	bA631M21.2; OOMD; OOMD2
Protein Pathways:	Gap junction, Pathogenic Escherichia coli infection

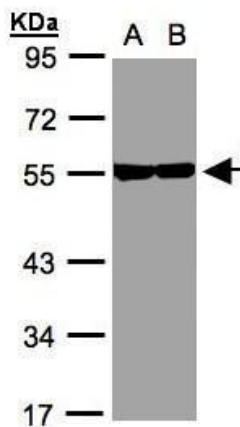


[View online »](#)

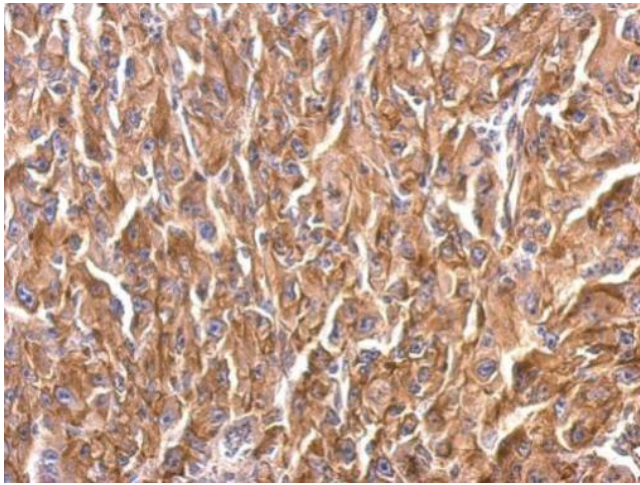
Product images:



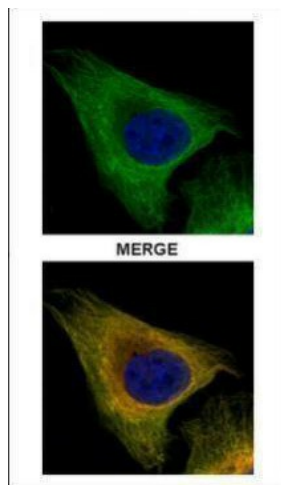
beta Tubulin 8 antibody [C2C3], C-term detects RP11-631M21.2 protein by Western blot analysis. A. 30 ug Neuro2A whole cell lysate/extract. B. 30 ug GL261 whole cell lysate/extract. C. 30 ug C8D30 whole cell lysate/extract. D. 30 ug NIH-3T3 whole cell lysa



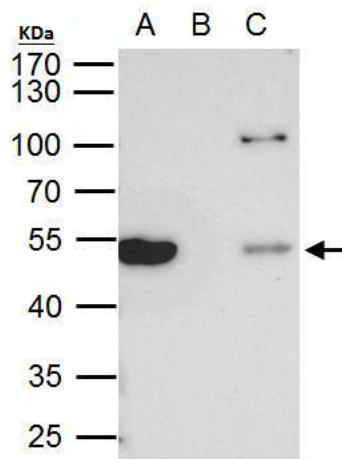
Sample (30 ug whole cell lysate). A:A431. B:H1299. 10% SDS PAGE. TA309065 diluted at 1:1000



beta Tubulin 8 antibody [C2C3], C-term detects RP11-631M21.2 protein at cytosol on Mahlarvu xenograft by immunohistochemical analysis. Sample: Paraffin-embedded Mahlarvu xenograft. beta Tubulin 8 antibody [C2C3], C-term (TA309065) dilution: 1:500.



Confocal immunofluorescence analysis (Olympus FV10i) of paraformaldehyde-fixed U2OS, using beta Tubulin 8 (TA309065) antibody (Green) at 1:500 dilution. Alpha-tubulin filaments were labeled with anti-alpha tubulin antibody (Red) at 1:2000.



beta Tubulin 8 antibody immunoprecipitates beta Tubulin 8 protein in IP experiments. IP Sample: 293T whole cell lysate/extract. A. 40 ug 293T whole cell lysate/extract. B. Control with 2 ug of preimmune rabbit IgG. C. Immunoprecipitation of beta Tubulin 8