

## Product datasheet for **TA309063**

### **C11orf85 (MAJIN) Rabbit Polyclonal Antibody**

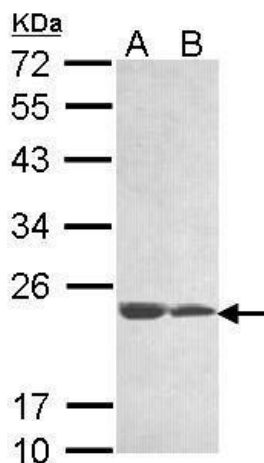
#### **Product data:**

|                         |  |
|-------------------------|--|
| Product Type:           | Primary Antibodies   |
| Applications:           | IF, WB   |
| Recommended Dilution:   | ICC/IF:1:100-1:1000; WB:1:500-1:3000   |
| Reactivity:             | Human  |
| Host:                   | Rabbit   |
| Isotype:                | IgG  |
| Clonality:              | Polyclonal   |
| Immunogen:              | Recombinant fragment corresponding to a region within amino acids 1 and 206 of LOC283129 (Uniprot ID#Q3KP22) |
| Formulation:            | 0.1M Tris, 0.1M Glycine, 10% Glycerol (pH7). 0.01% Thimerosal was added as a preservative.                   |
| Concentration:          | lot specific   |
| Purification:           | Purified by antigen-affinity chromatography.   |
| Conjugation:            | Unconjugated   |
| Storage:                | Store at -20°C as received.  |
| Stability:              | Stable for 12 months from date of receipt.   |
| Predicted Protein Size: | 25 kDa   |
| Gene Name:              | membrane anchored junction protein   |
| Database Link:          | <a href="#">NP_001032302</a><br><a href="#">Entrez Gene 283129 Human</a><br><a href="#">Q3KP22</a>           |
| Synonyms:               | MGC126364  |

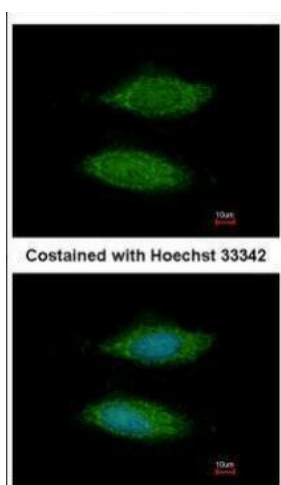


[View online »](#)

## Product images:



Sample (30 ug of whole cell lysate). A: 293T. B: A431. 12% SDS PAGE. TA309063 diluted at 1:1000.



Immunofluorescence analysis of methanol-fixed HeLa, using LOC283129 (TA309063) antibody at 1:200 dilution.