

Product datasheet for **TA309059**

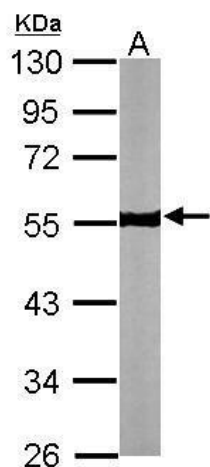
beta V Tubulin (TUBB) Rabbit Polyclonal Antibody

Product data:

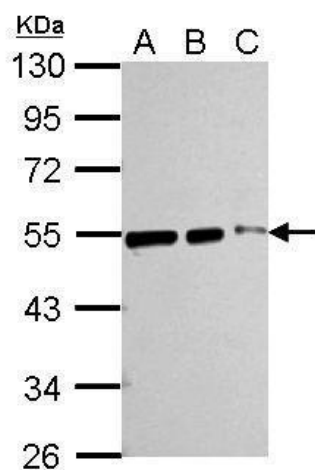
Product Type:	Primary Antibodies
Applications:	IF, IHC, WB
Recommended Dilution:	ICC/IF:1:100-1:1000; IHC:1:100-1:1000; WB:1:1000-1:10000
Reactivity:	Human, Mouse
Host:	Rabbit
Isotype:	IgG
Clonality:	Polyclonal
Immunogen:	Recombinant protein fragment contain a sequence corresponding to a region within amino acids 238 and 429 of beta Tubulin
Formulation:	1XPBS, 20% Glycerol (pH7). 0.025% ProClin 300 was added as a preservative.
Concentration:	lot specific
Purification:	Purified by antigen-affinity chromatography.
Conjugation:	Unconjugated
Storage:	Store at -20°C as received.
Stability:	Stable for 12 months from date of receipt.
Predicted Protein Size:	50 kDa
Gene Name:	tubulin beta class I
Database Link:	NP_821133 Entrez Gene 203068 Human P07437
Synonyms:	CDCBM6; CSCSC1; M40; OK; SW-cl.56; TUBB1; TUBB5
Protein Families:	Druggable Genome
Protein Pathways:	Gap junction, Pathogenic Escherichia coli infection


[View online »](#)

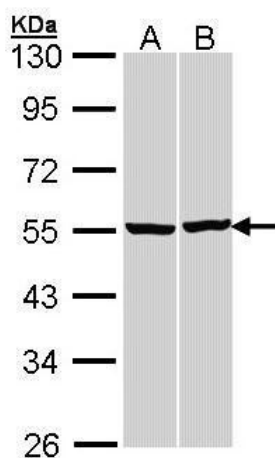
Product images:



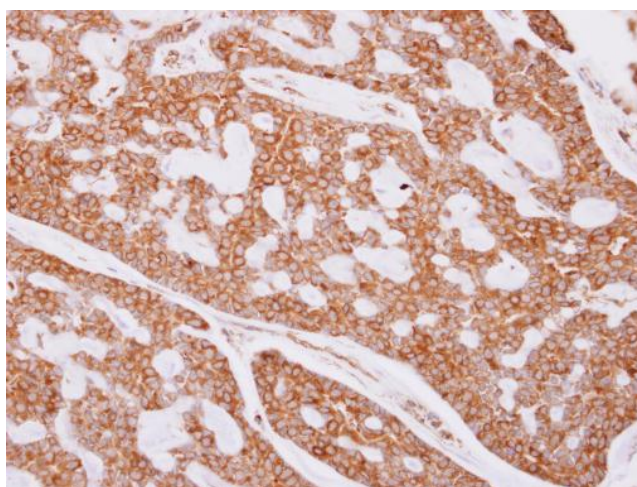
Sample (30 ug of whole cell lysate). A: NIH-3T3. 10% SDS PAGE. TA309059 diluted at 1:5000.



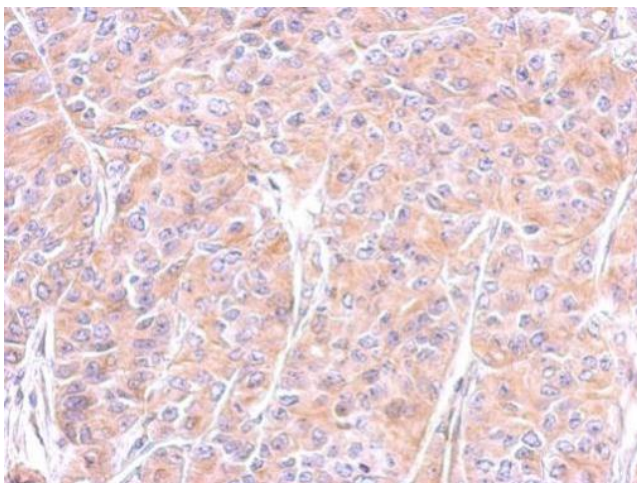
Sample (whole cell lysate). A: 293T 20ug. B: 293T 10ug. C: 293T 5ug. 10% SDS PAGE. TA309059 diluted at 1:10000.



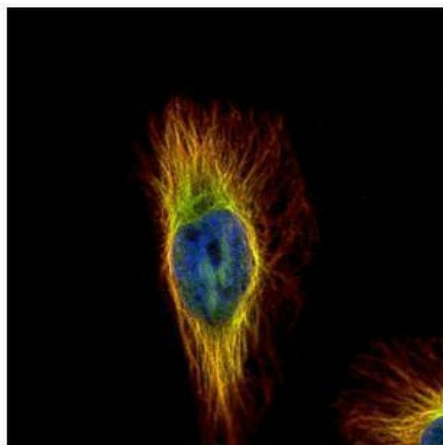
Sample (30 ug of whole cell lysate). A: 293T. B: H1299. 10% SDS PAGE. TA309059 diluted at 1:3000.



beta Tubulin antibody detects beta Tubulin protein at cytoplasm on breast carcinoma by immunohistochemical analysis. Sample: Paraffin-embedded breast carcinoma. beta Tubulin antibody (TA309059) dilution: 1:500.



Immunohistochemical analysis of paraffin-embedded AGS xenograft, using beta Tubulin (TA309059) antibody at 1:500 dilution.



Confocal immunofluorescence analysis (Olympus FV10i) of paraformaldehyde-fixed HeLa, using beta Tubulin (TA309059) antibody (Green) at 1:500 dilution. Alpha-tubulin filaments were labeled with anti-alpha tubulin antibody (Red) at 1:2000.