

Product datasheet for **TA309055**

GIMAP8 Rabbit Polyclonal Antibody

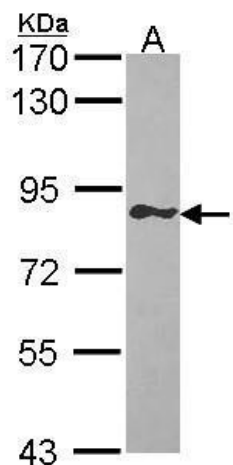
Product data:

Product Type:	Primary Antibodies
Applications:	WB
Recommended Dilution:	WB:1:500-1:3000
Reactivity:	Human
Host:	Rabbit
Isotype:	IgG
Clonality:	Polyclonal
Immunogen:	Synthetic peptide corresponding to a region within amino acids 352 and 443 of GIMAP8 (Uniprot ID#Q8ND71)
Formulation:	0.1M Tris, 0.1M Glycine, 10% Glycerol (pH7). 0.01% Thimerosal was added as a preservative.
Concentration:	lot specific
Purification:	Purified by antigen-affinity chromatography.
Conjugation:	Unconjugated
Storage:	Store at -20°C as received.
Stability:	Stable for 12 months from date of receipt.
Predicted Protein Size:	75 kDa
Gene Name:	GTPase, IMAP family member 8
Database Link:	NP_783161 Entrez Gene 155038 Human Q8ND71
Background:	This gene encodes a protein belonging to the GTP-binding superfamily and to the immun-associated nucleotide (IAN) subfamily of nucleotide-binding proteins. In humans, the IAN subfamily genes are located in a cluster at 7q36.1. [provided by RefSeq]
Synonyms:	IAN-9; IAN6; IAN9; IANT



[View online »](#)

Product images:



Sample (30 ug of whole cell lysate). A: Raji. 7.5% SDS PAGE. GIMAP8 antibody. TA309055 diluted at 1:1000.