

Product datasheet for **TA309047**

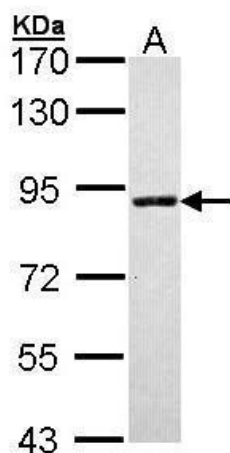
SLC26A8 Rabbit Polyclonal Antibody

Product data:

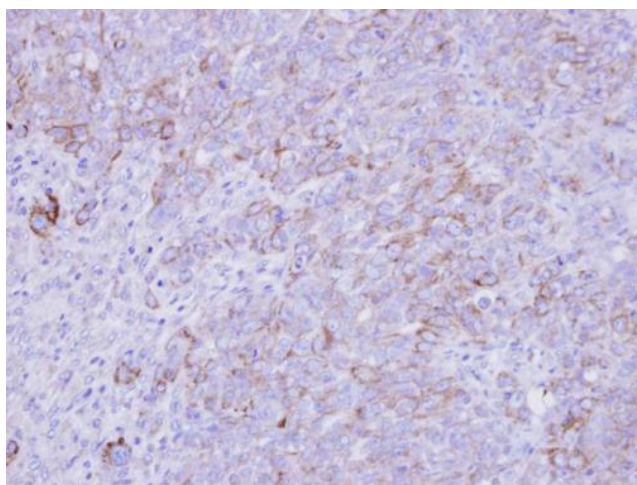
Product Type:	Primary Antibodies
Applications:	IHC, WB
Recommended Dilution:	IHC:1:100-1:1000; WB:1:500-1:3000
Reactivity:	Human
Host:	Rabbit
Isotype:	IgG
Clonality:	Polyclonal
Immunogen:	Recombinant fragment contain a sequence corresponding to a region within amino acids 613 and 850 of SLC26A8 (Uniprot ID#Q96RN1)
Formulation:	1XPBS, 1% BSA, 20% Glycerol (pH7). 0.01% Thimerosal was added as a preservative.
Concentration:	lot specific
Purification:	Purified by antigen-affinity chromatography.
Conjugation:	Unconjugated
Storage:	Store at -20°C as received.
Stability:	Stable for 12 months from date of receipt.
Predicted Protein Size:	109 kDa
Gene Name:	solute carrier family 26 member 8
Database Link:	NP_443193 Entrez Gene 116369 Human Q96RN1
Background:	This gene is one member of a family of sulfate/anion transporter genes. Family members are well conserved in their genomic (number and size of exons) and protein (aa length among species) structures yet have markedly different tissue expression patterns. This gene is expressed primarily in spermatocytes. Two transcript variants encoding different isoforms have been found. [provided by RefSeq]
Synonyms:	SPGF3; TAT1
Protein Families:	Transmembrane


[View online »](#)

Product images:



Sample (30 ug of whole cell lysate). A: Molt-4.
7.5% SDS PAGE. TA309047 diluted at 1:1000.



Immunohistochemical analysis of paraffin-
embedded DLD-1 xenograft, using SLC26A8
(TA309047) antibody at 1:500 dilution.