

## Product datasheet for **TA309046**

### NLRP3 Rabbit Polyclonal Antibody

#### Product data:

Product Type:	Primary Antibodies
Applications:	WB
Recommended Dilution:	WB:1:500-1:3000
Reactivity:	Human (Predicted: Rat, Pig, Bovine, Rhesus Monkey, Mouse)
Host:	Rabbit
Isotype:	IgG
Clonality:	Polyclonal
Immunogen:	Synthetic peptide corresponding to a region within amino acids 974 and 1036 of NLRP3 (Uniprot ID#Q96P20)
Formulation:	0.1M Tris, 0.1M Glycine, 10% Glycerol (pH7). 0.01% Thimerosal was added as a preservative.
Concentration:	lot specific
Purification:	Purified by antigen-affinity chromatography.
Conjugation:	Unconjugated
Storage:	Store at -20°C as received.
Stability:	Stable for 12 months from date of receipt.
Predicted Protein Size:	118 kDa
Gene Name:	NLR family, pyrin domain containing 3
Database Link:	<a href="#">NP_001120934</a> <a href="#">Entrez Gene 216799 Mouse</a> <a href="#">Entrez Gene 287362 Rat</a> <a href="#">Entrez Gene 114548 Human</a> <a href="#">Q96P20</a>



[View online »](#)

**Background:**

This gene encodes a pyrin-like protein containing a pyrin domain, a nucleotide-binding site (NBS) domain, and a leucine-rich repeat (LRR) motif. This protein interacts with the apoptosis-associated speck-like protein PYCARD/ASC, which contains a caspase recruitment domain, and is a member of the NALP3 inflammasome complex. This complex functions as an upstream activator of NF-kappaB signaling, and it plays a role in the regulation of inflammation, the immune response, and apoptosis. Mutations in this gene are associated with familial cold autoinflammatory syndrome (FCAS), Muckle-Wells syndrome (MWS), chronic infantile neurological cutaneous and articular (CINCA) syndrome, and neonatal-onset multisystem inflammatory disease (NOMID). Multiple alternatively spliced transcript variants encoding distinct isoforms have been identified for this gene. Alternative 5' UTR structures are suggested by available data; however, insufficient evidence is available to determine if all of the represented 5' UTR splice patterns are biologically valid. [provided by RefSeq]

**Synonyms:**

AGTAVPRL; All; AVP; C1orf7; CIAS1; CLR1.1; FCAS; FCAS1; FCU; MWS; NALP3; PYPAF1

**Note:**

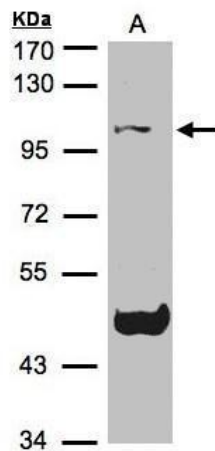
Seq homology of immunogen across species: Mouse (85%), Rat (92%), Pig (92%), Rhesus Monkey (92%), Bovine (92%)

**Protein Families:**

Druggable Genome

**Protein Pathways:**

NOD-like receptor signaling pathway

**Product images:**

Sample (30 ug of whole cell lysate). A:Raji. 7.5% SDS PAGE. TA309046 diluted at 1:1500