

Product datasheet for **TA309042**

SLC25A33 Rabbit Polyclonal Antibody

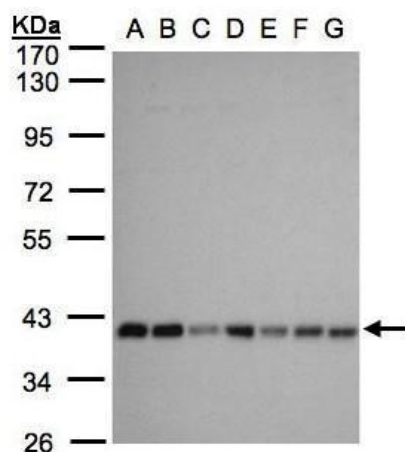
Product data:

Product Type:	Primary Antibodies
Applications:	IHC, WB
Recommended Dilution:	IHC:1:100-1:1000; WB:1:500-1:3000
Reactivity:	Human (Predicted: Mouse, Cow, Sheep)
Host:	Rabbit
Isotype:	IgG
Clonality:	Polyclonal
Immunogen:	Recombinant fragment corresponding to a region within amino acids 114 and 321 of SLC25A33 (Uniprot ID#Q9BSK2)
Formulation:	0.1M Tris, 0.1M Glycine, 10% Glycerol (pH7). 0.01% Thimerosal was added as a preservative.
Concentration:	lot specific
Purification:	Purified by antigen-affinity chromatography.
Conjugation:	Unconjugated
Storage:	Store at -20°C as received.
Stability:	Stable for 12 months from date of receipt.
Predicted Protein Size:	35 kDa
Gene Name:	solute carrier family 25 member 33
Database Link:	NP_115691 Entrez Gene 70556 Mouse Entrez Gene 84275 Human Q9BSK2
Background:	SLC25A33 belongs to the SLC25 family of mitochondrial carrier proteins (Haitina et al., 2006 [PubMed 16949250]). [supplied by OMIM]
Synonyms:	BMSC-MCP; PNC1
Note:	Seq homology of immunogen across species: Mouse (88%), Cow (97%), Sheep (98%)
Protein Families:	Transmembrane

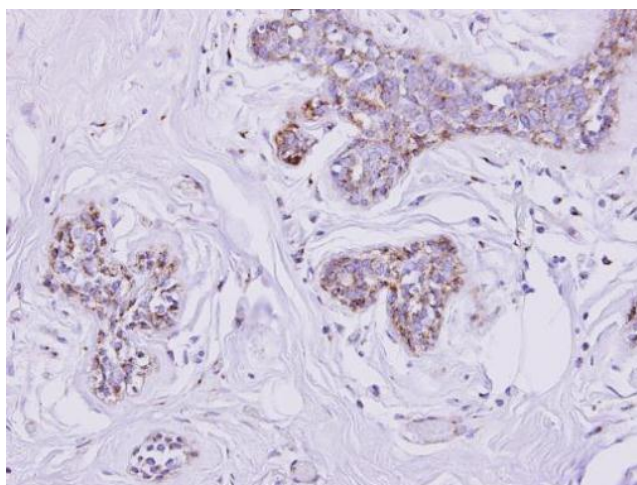


[View online »](#)

Product images:



Sample (30 ug whole cell lysate). A: 293T. B: A431. C: H1299. D: HeLa S3. E: Hep G2. F: MOLT4. G: Raji. 10% SDS PAGE. TA309042 diluted at 1:1000



Immunohistochemical analysis of paraffin-embedded SAOS-2 xenograft, using SLC25A33 (TA309042) antibody at 1:500 dilution.