

## Product datasheet for **TA309041**

### YIPF4 Rabbit Polyclonal Antibody

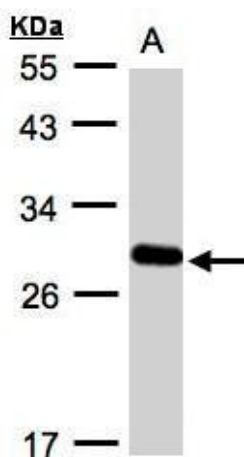
#### Product data:

Product Type:	Primary Antibodies
Applications:	IHC, WB
Recommended Dilution:	IHC:1:100-1:1000; WB:1:500-1:3000
Reactivity:	Human (Predicted: Chimpanzee, Rhesus Monkey)
Host:	Rabbit
Isotype:	IgG
Clonality:	Polyclonal
Immunogen:	Recombinant fragment corresponding to a region within amino acids 1 and 192 of YIPF4 (Uniprot ID#Q9BSR8)
Formulation:	0.1M Tris, 0.1M Glycine, 10% Glycerol (pH7). 0.01% Thimerosal was added as a preservative.
Concentration:	lot specific
Purification:	Purified by antigen-affinity chromatography.
Conjugation:	Unconjugated
Storage:	Store at -20°C as received.
Stability:	Stable for 12 months from date of receipt.
Predicted Protein Size:	27 kDa
Gene Name:	Yip1 domain family member 4
Database Link:	<a href="#">NP_115688</a> <a href="#">Entrez Gene 84272 Human</a> <a href="#">Q9BSR8</a>
Synonyms:	FinGER4; Nbla11189
Note:	Seq homology of immunogen across species: Rhesus Monkey (100%), Chimpanzee (100%)
Protein Families:	Transmembrane

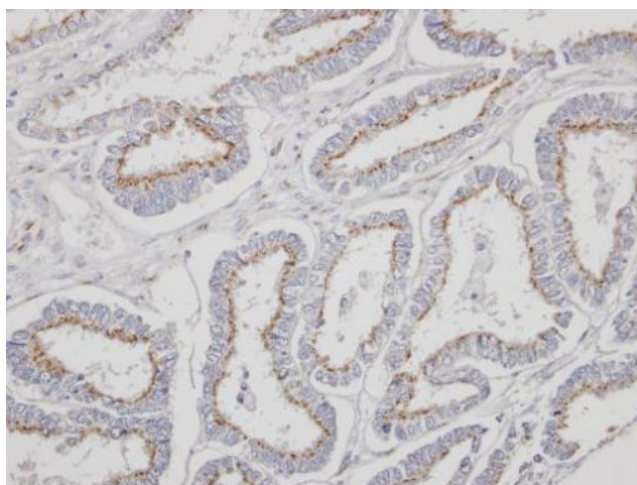


[View online »](#)

## Product images:



Sample (30 ug whole cell lysate). A:A431. 12% SDS PAGE. TA309041 diluted at 1:1000



Immunohistochemical analysis of paraffin-embedded Endometrial CA, using YIPF4 (TA309041) antibody at 1:500 dilution.