

Product datasheet for **TA309040**

CDA11 (TATDN1) Rabbit Polyclonal Antibody

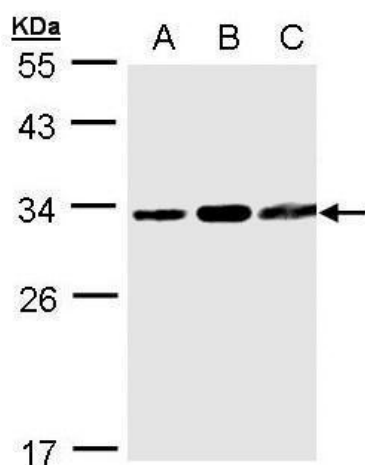
Product data:

Product Type:	Primary Antibodies
Applications:	IF, IHC, WB
Recommended Dilution:	ICC/IF:1:100-1:1000; IHC:1:100-1:1000; WB:1:500-1:3000
Reactivity:	Human (Predicted: Mouse, Bovine)
Host:	Rabbit
Isotype:	IgG
Clonality:	Polyclonal
Immunogen:	Recombinant fragment corresponding to a region within amino acids 1 and 199 of TATDN1 (Uniprot ID#Q6P1N9)
Formulation:	0.1M Tris, 0.1M Glycine, 10% Glycerol (pH7). 0.01% Thimerosal was added as a preservative.
Concentration:	lot specific
Purification:	Purified by antigen-affinity chromatography.
Conjugation:	Unconjugated
Storage:	Store at -20°C as received.
Stability:	Stable for 12 months from date of receipt.
Predicted Protein Size:	34 kDa
Gene Name:	TatD DNase domain containing 1
Database Link:	NP_114415 Entrez Gene 69694 Mouse Entrez Gene 83940 Human Q6P1N9
Synonyms:	CDA11
Note:	Seq homology of immunogen across species: Mouse (89%), Bovine (93%)

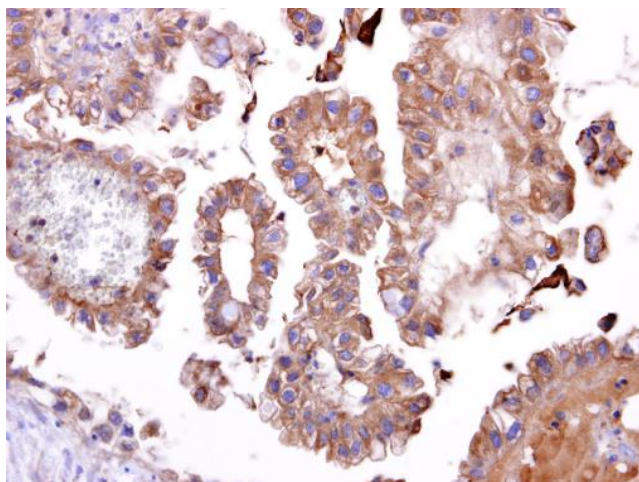


[View online »](#)

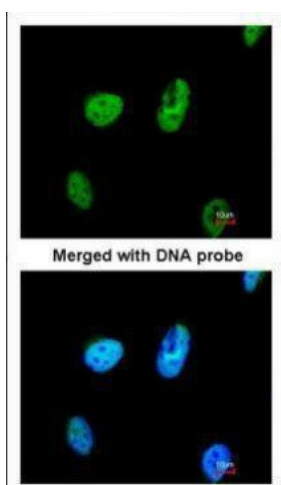
Product images:



Sample (30 ug whole cell lysate). A:293T. B:A431. C:MOLT4. 12% SDS PAGE. TA309040 diluted at 1:1000



TATDN1 antibody [N1C2] detects TATDN1 protein at cytosol on human ovarian carcinoma by immunohistochemical analysis. Sample: TATDN1 antibody [N1C2] (TA309040) dilution: 1:250.



Immunofluorescence analysis of paraformaldehyde-fixed HeLa, using TATDN1 (TA309040) antibody at 1:200 dilution.