

Product datasheet for **TA309036**

VCIP 135 (VCPIP1) Rabbit Polyclonal Antibody

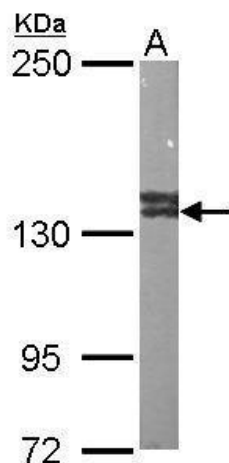
Product data:

Product Type:	Primary Antibodies
Applications:	IF, IHC, WB
Recommended Dilution:	ICC/IF:1:100-1:1000; IHC:1:100-1:1000; WB:1:1000-1:10000
Reactivity:	Human, Mouse (Predicted: Rhesus Monkey)
Host:	Rabbit
Isotype:	IgG
Clonality:	Polyclonal
Immunogen:	Recombinant fragment corresponding to a region within amino acids 955 and 1222 of VCPIP1 (Uniprot ID#Q96JH7)
Formulation:	0.1M Tris, 0.1M Glycine, 10% Glycerol (pH7). 0.01% Thimerosal was added as a preservative.
Purification:	Purified by antigen-affinity chromatography.
Conjugation:	Unconjugated
Storage:	Store at -20°C as received.
Stability:	Stable for 12 months from date of receipt.
Predicted Protein Size:	134 kDa
Gene Name:	valosin containing protein interacting protein 1
Database Link:	NP_079330 Entrez Gene 70675 Mouse Entrez Gene 80124 Human Q96JH7
Synonyms:	DUBA3; VCIP135
Note:	Seq homology of immunogen across species: Rhesus Monkey (100%)

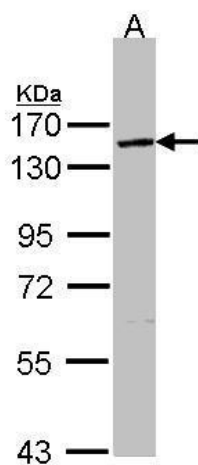


[View online »](#)

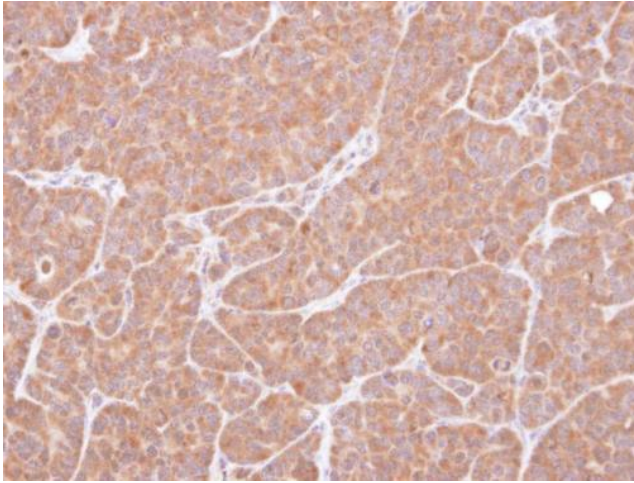
Product images:



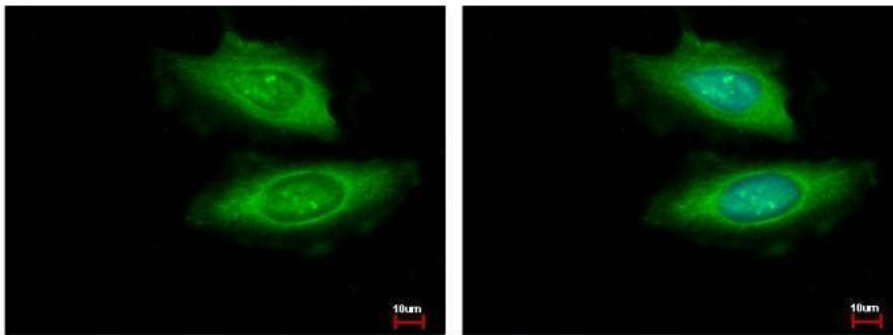
Sample (50 ug of whole cell lysate). A: Mouse brain. 5% SDS PAGE. TA309036 diluted at 1:1000.



Sample (30 ug of whole cell lysate). A: H1299. 7.5 % SDS PAGE. TA309036 diluted at 1:5000



Immunohistochemical analysis of paraffin-embedded SW480 xenograft, using VCPIP1 (TA309036) antibody at 1:100 dilution.



VCPIP1 antibody [C2C3], C-term detects VCPIP1 protein at Cytoplasm by immunofluorescent analysis. Sample: HeLa cells were fixed in -20°C 100% MeOH for 5 min. Green: VCPIP1 protein stained by VCPIP1 antibody [C2C3], C-term (TA309036) diluted at 1:500. Blue