

Product datasheet for **TA309034**

CCDC102B Rabbit Polyclonal Antibody

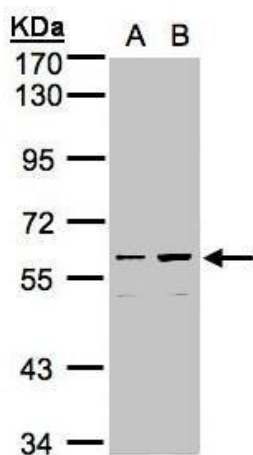
Product data:

Product Type:	Primary Antibodies
Applications:	WB
Recommended Dilution:	WB:1:500-1:3000
Reactivity:	Human
Host:	Rabbit
Isotype:	IgG
Clonality:	Polyclonal
Immunogen:	Recombinant fragment corresponding to a region within amino acids 244 and 513 of CCDC102B (Uniprot ID#Q68D86)
Formulation:	0.1M Tris, 0.1M Glycine, 10% Glycerol (pH7). 0.01% Thimerosal was added as a preservative.
Concentration:	lot specific
Purification:	Purified by antigen-affinity chromatography.
Conjugation:	Unconjugated
Storage:	Store at -20°C as received.
Stability:	Stable for 12 months from date of receipt.
Predicted Protein Size:	60 kDa
Gene Name:	coiled-coil domain containing 102B
Database Link:	NP_001087198 Entrez Gene 79839 Human Q68D86
Synonyms:	ACY1L; AN; C18orf14; HsT1731



[View online »](#)

Product images:



Sample (30ug whole cell lysate). A:Hep G2.
B:MOLT4. 7.5% SDS PAGE. TA309034 diluted at
1:1000