

Product datasheet for **TA309033**

BEN Domain Containing Protein 5 (BEND5) Rabbit Polyclonal Antibody

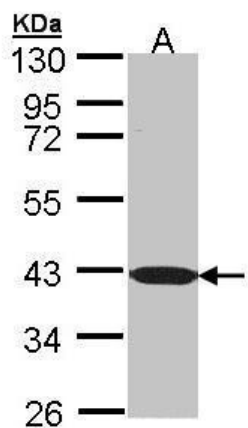
Product data:

Product Type:	Primary Antibodies
Applications:	IF, WB
Recommended Dilution:	ICC/IF:1:100-1:1000; WB:1:500-1:3000
Reactivity:	Human (Predicted: Mouse, Rat, Bovine)
Host:	Rabbit
Isotype:	IgG
Clonality:	Polyclonal
Immunogen:	Recombinant fragment corresponding to a region within amino acids 1 and 255 of C1orf165 (Uniprot ID#Q7L4P6)
Formulation:	0.1M Tris, 0.1M Glycine, 10% Glycerol (pH7). 0.01% Thimerosal was added as a preservative.
Purification:	Purified by antigen-affinity chromatography.
Conjugation:	Unconjugated
Storage:	Store at -20°C as received.
Stability:	Stable for 12 months from date of receipt.
Predicted Protein Size:	48 kDa
Gene Name:	BEN domain containing 5
Database Link:	NP_078879 Entrez Gene 67621 Mouse Entrez Gene 362564 Rat Entrez Gene 79656 Human Q7L4P6
Synonyms:	C1orf165
Note:	Seq homology of immunogen across species: Mouse (97%), Rat (95%), Bovine (96%)

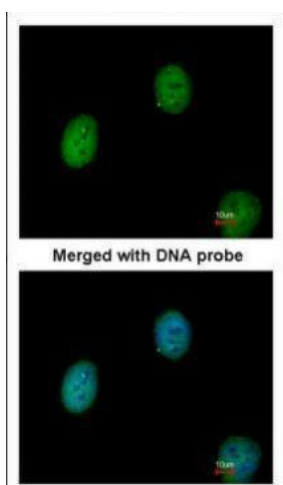


[View online »](#)

Product images:



Sample (30 ug of whole cell lysate). A: Molt-4. 10 % SDS PAGE. TA309033 diluted at 1:1000



Immunofluorescence analysis of paraformaldehyde-fixed HeLa, using C1orf165 (TA309033) antibody at 1:200 dilution.