

## Product datasheet for **TA309032**

### **RIC8 (RIC8A) Rabbit Polyclonal Antibody**

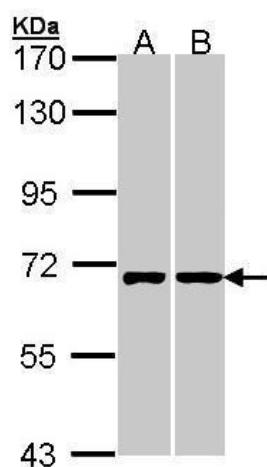
#### **Product data:**

<b>Product Type:</b>	Primary Antibodies
<b>Applications:</b>	IHC, WB
<b>Recommended Dilution:</b>	IHC:1:100-1:1000; WB:1:500-1:3000
<b>Reactivity:</b>	Human (Predicted: Rat, Bovine)
<b>Host:</b>	Rabbit
<b>Isotype:</b>	IgG
<b>Clonality:</b>	Polyclonal
<b>Immunogen:</b>	Synthetic peptide contain a sequence corresponding to a region within amino acids 478 and 531 of RIC8A
<b>Formulation:</b>	0.1M Tris, 0.1M Glycine, 10% Glycerol (pH7). 0.01% Thimerosal was added as a preservative.
<b>Concentration:</b>	lot specific
<b>Purification:</b>	Purified by antigen-affinity chromatography.
<b>Conjugation:</b>	Unconjugated
<b>Storage:</b>	Store at -20°C as received.
<b>Stability:</b>	Stable for 12 months from date of receipt.
<b>Predicted Protein Size:</b>	60 kDa
<b>Gene Name:</b>	RIC8 guanine nucleotide exchange factor A
<b>Database Link:</b>	<a href="#">NP_068751</a> <a href="#">Entrez Gene 293614 Rat</a> <a href="#">Entrez Gene 60626 Human</a> <a href="#">Q9NPQ8</a>
<b>Synonyms:</b>	RIC8
<b>Note:</b>	Seq homology of immunogen across species: Rat (100%), Bovine (100%)

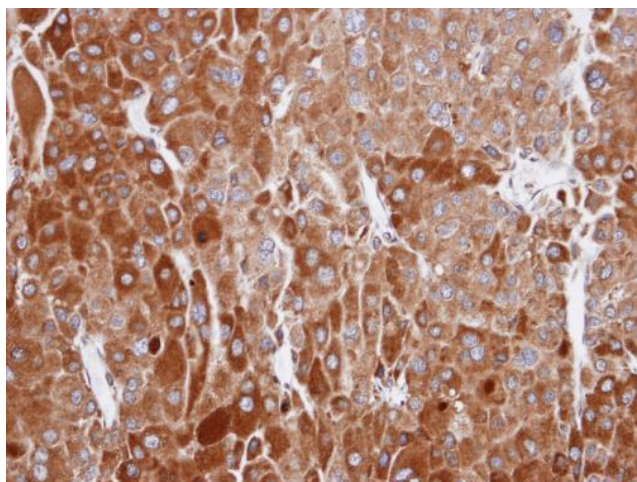


[View online »](#)

## Product images:



Sample (30 ug of whole cell lysate). A: A431. B: HeLa. 7.5% SDS PAGE. TA309032 diluted at 1:1000.



Immunohistochemical analysis of paraffin-embedded Adrenal cortical tumor, using RIC8A (TA309032) antibody at 1:100 dilution.