

Product datasheet for **TA309030**

MID1IP1 Rabbit Polyclonal Antibody

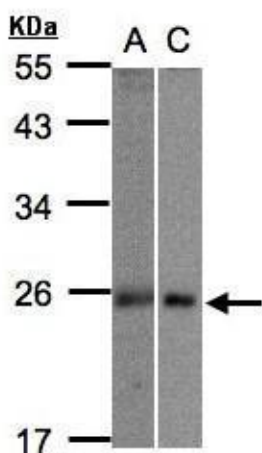
Product data:

Product Type:	Primary Antibodies
Applications:	IF, IHC, WB
Recommended Dilution:	ICC/IF:1:100-1:1000; IHC:1:100-1:1000; WB:1:500-1:3000
Reactivity:	Human (Predicted: Rhesus Monkey)
Host:	Rabbit
Isotype:	IgG
Clonality:	Polyclonal
Immunogen:	Recombinant fragment corresponding to a region within amino acids 1 and 183 of MID1IP1 (Uniprot ID#Q9NPA3)
Formulation:	0.1M Tris, 0.1M Glycine, 10% Glycerol (pH7). 0.01% Thimerosal was added as a preservative.
Concentration:	lot specific
Purification:	Purified by antigen-affinity chromatography.
Conjugation:	Unconjugated
Storage:	Store at -20°C as received.
Stability:	Stable for 12 months from date of receipt.
Predicted Protein Size:	20 kDa
Gene Name:	MID1 interacting protein 1
Database Link:	NP_067065 Entrez Gene 58526 Human Q9NPA3
Synonyms:	G12-like; MIG12; S14R; STRAIT11499; THRSPL
Note:	Seq homology of immunogen across species: Rhesus Monkey (100%)

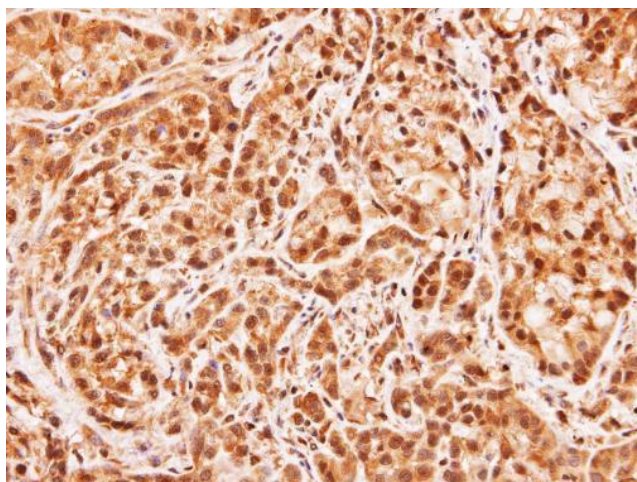


[View online »](#)

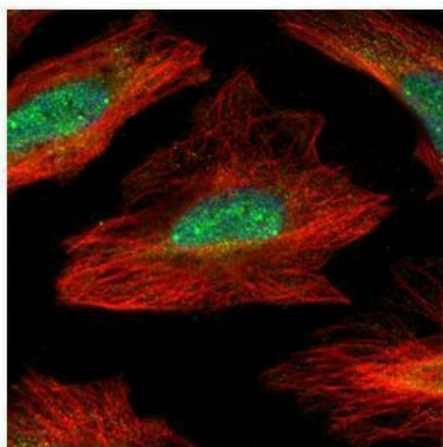
Product images:



Sample (30 ug whole cell lysate). A:293T. B:Hep G2. 12% SDS PAGE. TA309030 diluted at 1:1000



Immunohistochemical analysis of paraffin-embedded A549 xenograft, using MID1IP1 (TA309030) antibody at 1:100 dilution.



Confocal immunofluorescence analysis (Olympus FV10i) of paraformaldehyde-fixed HeLa, using MID1IP1 (TA309030) antibody (Green) at 1:500 dilution. Alpha-tubulin filaments were labeled with anti-alpha tubulin antibody (Red) at 1:2000.