

## Product datasheet for **TA309029**

### RAP2C Rabbit Polyclonal Antibody

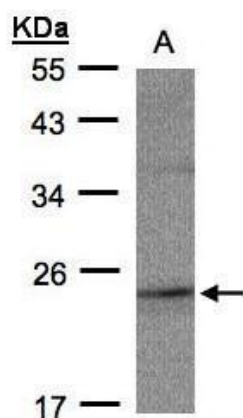
#### Product data:

Product Type:	Primary Antibodies
Applications:	IHC, WB
Recommended Dilution:	IHC:1:100-1:1000; WB:1:500-1:3000
Reactivity:	Human (Predicted: Rat, Bovine, Rhesus Monkey, Mouse)
Host:	Rabbit
Isotype:	IgG
Clonality:	Polyclonal
Immunogen:	Recombinant fragment contain a sequence corresponding to a region within amino acids 1 and 133 of RAP2C (Uniprot ID#Q9Y3L5)
Formulation:	0.1M Tris, 0.1M Glycine, 10% Glycerol (pH7). 0.01% Thimerosal was added as a preservative.
Concentration:	lot specific
Purification:	Purified by antigen-affinity chromatography.
Conjugation:	Unconjugated
Storage:	Store at -20°C as received.
Stability:	Stable for 12 months from date of receipt.
Predicted Protein Size:	21 kDa
Gene Name:	RAP2C, member of RAS oncogene family
Database Link:	<a href="#">NP_067006</a> <a href="#">Entrez Gene 72065 Mouse</a> <a href="#">Entrez Gene 302495 Rat</a> <a href="#">Entrez Gene 57826 Human</a> <a href="#">Q9Y3L5</a>
Synonyms:	DKFZp313B211
Note:	Seq homology of immunogen across species: Mouse (100%), Rat (100%), Rhesus Monkey (100%), Bovine (100%)
Protein Families:	Druggable Genome

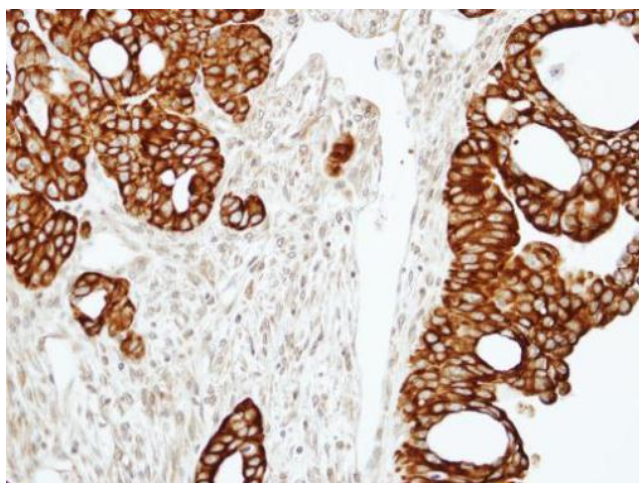


[View online »](#)

## Product images:



Sample (30 ug whole cell lysate). A: MOLT4. 12% SDS PAGE. TA309029 diluted at 1:500



Immunohistochemical analysis of paraffin-embedded N87 xenograft, using RAP2C (TA309029) antibody at 1:100 dilution.