

Product datasheet for **TA309028**

DIP2 homolog B (DIP2B) Rabbit Polyclonal Antibody

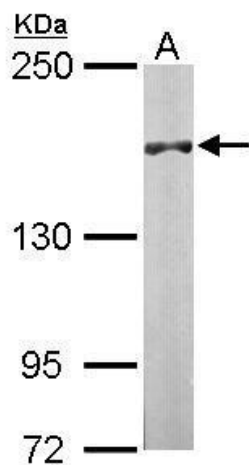
Product data:

Product Type:	Primary Antibodies
Applications:	IF, WB
Recommended Dilution:	ICC/IF:1:100-1:1000; WB:1:500-1:3000
Reactivity:	Human, Mouse (Predicted: Bovine)
Host:	Rabbit
Isotype:	IgG
Clonality:	Polyclonal
Immunogen:	Recombinant fragment corresponding to a region within amino acids 1168 and 1427 of DIP2B (Uniprot ID#Q9P265)
Formulation:	0.1M Tris, 0.1M Glycine, 10% Glycerol (pH7). 0.01% Thimerosal was added as a preservative.
Concentration:	lot specific
Purification:	Purified by antigen-affinity chromatography.
Conjugation:	Unconjugated
Storage:	Store at -20°C as received.
Stability:	Stable for 12 months from date of receipt.
Predicted Protein Size:	172 kDa
Gene Name:	disco interacting protein 2 homolog B
Database Link:	NP_775873 Entrez Gene 239667 Mouse Entrez Gene 57609 Human Q9P265
Synonyms:	KIAA1463; MGC104005
Note:	Seq homology of immunogen across species: Bovine (98%)

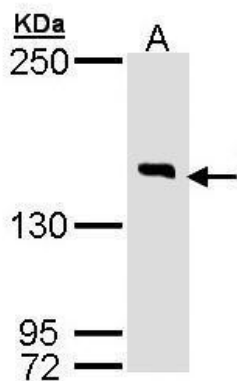


[View online »](#)

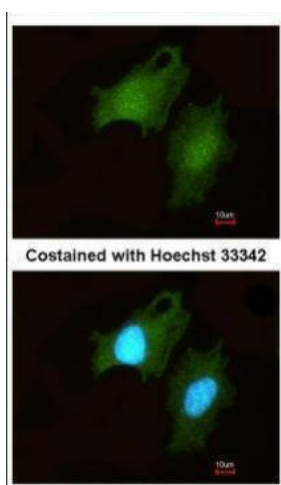
Product images:



Sample (50 ug of whole cell lysate). A: Mouse brain. 5% SDS PAGE. TA309028 diluted at 1:1000.



Sample (30 ug of whole cell lysate). A: HeLa. 7.5% SDS PAGE. TA309028 diluted at 1:1000



Immunofluorescence analysis of methanol-fixed HeLa, using DIP2B (TA309028) antibody at 1:200 dilution.