

## Product datasheet for **TA309027**

### **CAMK1D Rabbit Polyclonal Antibody**

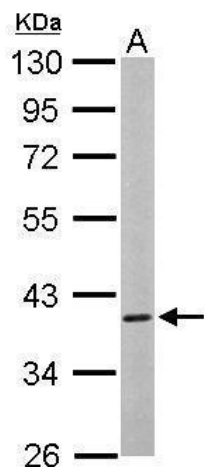
#### **Product data:**

<b>Product Type:</b>	Primary Antibodies
<b>Applications:</b>	IF, IHC, WB
<b>Recommended Dilution:</b>	ICC/IF:1:100-1:1000; IHC:1:100-1:1000; WB:1:500-1:3000
<b>Reactivity:</b>	Human, Mouse
<b>Host:</b>	Rabbit
<b>Isotype:</b>	IgG
<b>Clonality:</b>	Polyclonal
<b>Immunogen:</b>	Recombinant fragment corresponding to a region within amino acids 1 and 385 of CaMK1D (Uniprot ID#Q8IU85)
<b>Formulation:</b>	0.1M Tris, 0.1M Glycine, 10% Glycerol (pH7). 0.01% Thimerosal was added as a preservative.
<b>Concentration:</b>	lot specific
<b>Purification:</b>	Purified by antigen-affinity chromatography.
<b>Conjugation:</b>	Unconjugated
<b>Storage:</b>	Store at -20°C as received.
<b>Stability:</b>	Stable for 12 months from date of receipt.
<b>Predicted Protein Size:</b>	43 kDa
<b>Gene Name:</b>	calcium/calmodulin dependent protein kinase ID
<b>Database Link:</b>	<a href="#">NP_065130</a> <a href="#">Entrez Gene 227541</a> <a href="#">MouseEntrez Gene 57118</a> <a href="#">Human Q8IU85</a>
<b>Background:</b>	This gene encodes a member of the Ca <sup>2+</sup> /calmodulin-dependent protein kinase 1 subfamily of serine/threonine kinases. The encoded protein may be involved in the regulation of granulocyte function through the chemokine signal transduction pathway. Alternatively spliced transcript variants encoding different isoforms of this gene have been described. [provided by RefSeq]
<b>Synonyms:</b>	CaM-K1; CaMKID; CKLiK
<b>Protein Families:</b>	Druggable Genome, Protein Kinase

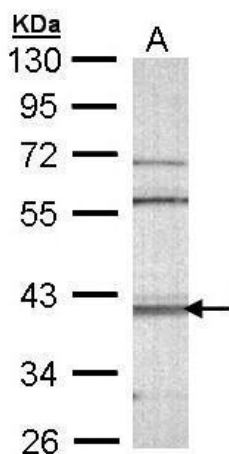


[View online »](#)

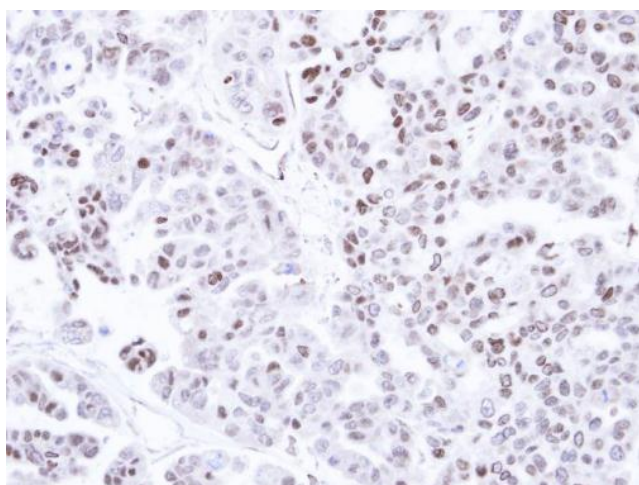
## Product images:



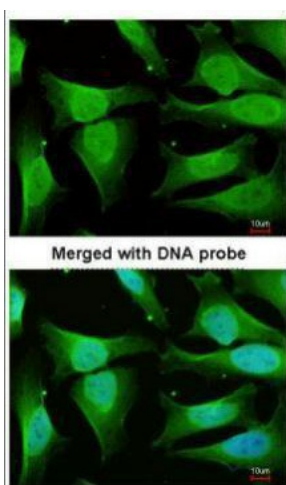
Sample (50 ug of whole cell lysate). A: Mouse brain. 10% SDS PAGE. TA309027 diluted at 1:1000.



Sample (30 ug of whole cell lysate). A: Molt-4. 10% SDS PAGE. TA309027 diluted at 1:1000



Immunohistochemical analysis of paraffin-embedded OVCAR3 xenograft, using CAMK1D (TA309027) antibody at 1:500 dilution.



Immunofluorescence analysis of paraformaldehyde-fixed HeLa, using CAMK1D (TA309027) antibody at 1:200 dilution.