

Product datasheet for **TA309026**

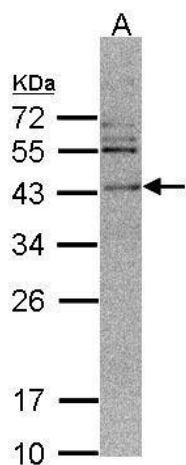
CAMK1D Rabbit Polyclonal Antibody

Product data:

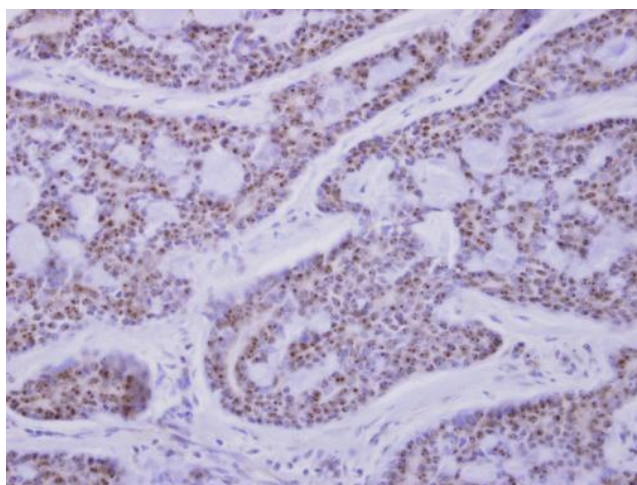
Product Type:	Primary Antibodies
Applications:	IF, IHC, WB
Recommended Dilution:	ICC/IF:1:100-1:1000; IHC:1:100-1:1000; WB:1:500-1:3000
Reactivity:	Human
Host:	Rabbit
Isotype:	IgG
Clonality:	Polyclonal
Immunogen:	Recombinant fragment corresponding to a region within amino acids 81 and 385 of CAMK1D (Uniprot ID#Q8IU85)
Formulation:	0.1M Tris, 0.1M Glycine, 10% Glycerol (pH7). 0.01% Thimerosal was added as a preservative.
Concentration:	lot specific
Purification:	Purified by antigen-affinity chromatography.
Conjugation:	Unconjugated
Storage:	Store at -20°C as received.
Stability:	Stable for 12 months from date of receipt.
Predicted Protein Size:	43 kDa
Gene Name:	calcium/calmodulin dependent protein kinase ID
Database Link:	NP_065130 Entrez Gene 57118 Human Q8IU85
Background:	This gene encodes a member of the Ca ²⁺ /calmodulin-dependent protein kinase 1 subfamily of serine/threonine kinases. The encoded protein may be involved in the regulation of granulocyte function through the chemokine signal transduction pathway. Alternatively spliced transcript variants encoding different isoforms of this gene have been described. [provided by RefSeq]
Synonyms:	CaM-K1; CaMKID; CKLiK
Protein Families:	Druggable Genome, Protein Kinase



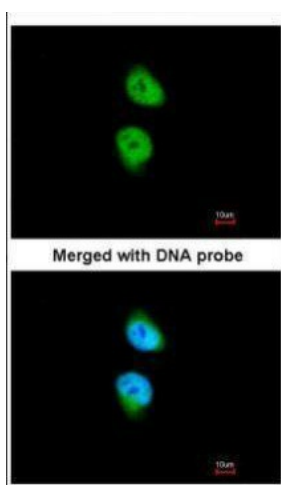
[View online »](#)

Product images:

Sample (30 ug of whole cell lysate). A: 293T. 12% SDS PAGE. TA309026 diluted at 1:500



CaMK1D antibody detects CAMK1D protein at nucleus on breast carcinoma by immunohistochemical analysis. Sample: Paraffin-embedded breast carcinoma. CaMK1D antibody (TA309026) dilution: 1:500.



Immunofluorescence analysis of paraformaldehyde-fixed HeLa, using CAMK1D (TA309026) antibody at 1:200 dilution.