

## Product datasheet for **TA309025**

### **CAMK1D Rabbit Polyclonal Antibody**

#### **Product data:**

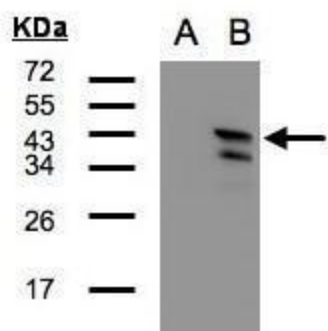
<b>Product Type:</b>	Primary Antibodies
<b>Applications:</b>	IF, IHC, WB
<b>Recommended Dilution:</b>	ICC/IF:1:100-1:1000; IHC:1:100-1:1000; WB:1:500-1:3000
<b>Reactivity:</b>	Human (Predicted: Mouse, Rat)
<b>Host:</b>	Rabbit
<b>Isotype:</b>	IgG
<b>Clonality:</b>	Polyclonal
<b>Immunogen:</b>	Recombinant fragment corresponding to a region within amino acids 1 and 205 of CaMK1D (Uniprot ID#Q8IU85)
<b>Formulation:</b>	0.1M Tris, 0.1M Glycine, 10% Glycerol (pH7). 0.01% Thimerosal was added as a preservative.
<b>Concentration:</b>	lot specific
<b>Purification:</b>	Purified by antigen-affinity chromatography.
<b>Conjugation:</b>	Unconjugated
<b>Storage:</b>	Store at -20°C as received.
<b>Stability:</b>	Stable for 12 months from date of receipt.
<b>Predicted Protein Size:</b>	43 kDa
<b>Gene Name:</b>	calcium/calmodulin dependent protein kinase ID
<b>Database Link:</b>	<a href="#">NP_065130</a> <a href="#">Entrez Gene 227541</a> <a href="#">MouseEntrez Gene 307124</a> <a href="#">RatEntrez Gene 57118</a> <a href="#">Human Q8IU85</a>
<b>Background:</b>	This gene encodes a member of the Ca <sup>2+</sup> /calmodulin-dependent protein kinase 1 subfamily of serine/threonine kinases. The encoded protein may be involved in the regulation of granulocyte function through the chemokine signal transduction pathway. Alternatively spliced transcript variants encoding different isoforms of this gene have been described. [provided by RefSeq]
<b>Synonyms:</b>	CaM-K1; CaMKID; CKLiK
<b>Note:</b>	Seq homology of immunogen across species: Mouse (100%), Rat (100%)



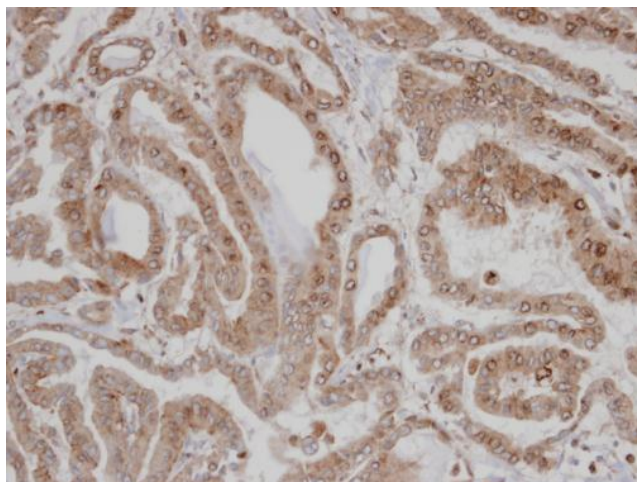
[View online »](#)

Protein Families: Druggable Genome, Protein Kinase

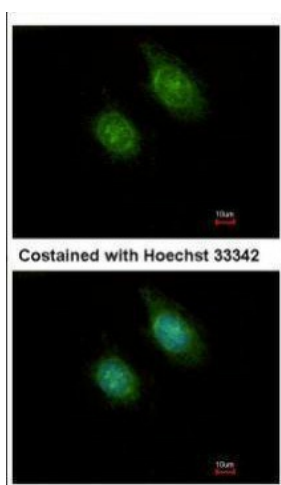
### Product images:



Western Blot analysis of CAMK1D expression in transfected 293T cell line by CAMK1D polyclonal antibody. A: Non-transfected lysate. B: CAMK1D transfected lysate. 12% SDS PAGE. TA309025 diluted at 1:500



Immunohistochemical analysis of paraffin-embedded Thyroid CA, using CAMK1D (TA309025) antibody at 1:100 dilution.



Immunofluorescence analysis of methanol-fixed HeLa, using CaMK1D (TA309025) antibody at 1:500 dilution.