

Product datasheet for **TA309022**

TMLHE Rabbit Polyclonal Antibody

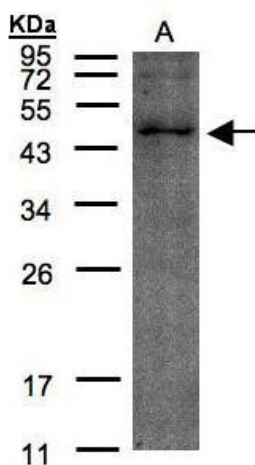
Product data:

Product Type:	Primary Antibodies
Applications:	WB
Recommended Dilution:	WB:1:100-1:1000
Reactivity:	Human (Predicted: Mouse, Chicken, Rat, Bovine)
Host:	Rabbit
Isotype:	IgG
Clonality:	Polyclonal
Immunogen:	Recombinant fragment corresponding to a region within amino acids 115 and 397 of TMLHE (Uniprot ID#Q9NVH6)
Formulation:	0.1M Tris, 0.1M Glycine, 10% Glycerol (pH7). 0.01% Thimerosal was added as a preservative.
Concentration:	lot specific
Purification:	Affinity purified by Protein A.
Conjugation:	Unconjugated
Storage:	Store at -20°C as received.
Stability:	Stable for 12 months from date of receipt.
Predicted Protein Size:	50 kDa
Gene Name:	trimethyllysine hydroxylase, epsilon
Database Link:	NP_060666 Entrez Gene 170898 RatEntrez Gene 192289 MouseEntrez Gene 55217 Human Q9NVH6
Background:	Epsilon-N-trimethyllysine hydroxylase (EC 1.14.11.8) catalyzes the conversion of epsilon-N-trimethyllysine to beta-hydroxy-N-epsilon-trimethyllysine in the first step of L-carnitine biosynthesis (Vaz et al., 2001 [PubMed 11431483]). [supplied by OMIM]
Synonyms:	AUTSX6; BBOX2; TMLD; TMLH; TMLHED; XAP130
Note:	Seq homology of immunogen across species: Mouse (95%), Chicken (91%), Rat (92%), Bovine (95%)
Protein Pathways:	Lysine degradation



[View online »](#)

Product images:



Sample (30 ug of whole cell lysate). A:HeLa S3.
12% SDS PAGE. TA309022 diluted at 1:200