

Product datasheet for **TA309021**

RBM28 Rabbit Polyclonal Antibody

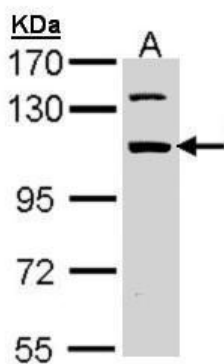
Product data:

Product Type:	Primary Antibodies
Applications:	IF, WB
Recommended Dilution:	ICC/IF:1:100-1:1000; WB:1:500-1:3000
Reactivity:	Human
Host:	Rabbit
Isotype:	IgG
Clonality:	Polyclonal
Immunogen:	Recombinant fragment corresponding to a region within amino acids 475 and 745 of RBM28 (Uniprot ID#Q9NW13)
Formulation:	0.1M Tris, 0.1M Glycine, 10% Glycerol (pH7). 0.01% Thimerosal was added as a preservative.
Concentration:	lot specific
Purification:	Purified by antigen-affinity chromatography.
Conjugation:	Unconjugated
Storage:	Store at -20°C as received.
Stability:	Stable for 12 months from date of receipt.
Predicted Protein Size:	86 kDa
Gene Name:	RNA binding motif protein 28
Database Link:	NP_060547 Entrez Gene 55131 Human Q9NW13
Synonyms:	ANES

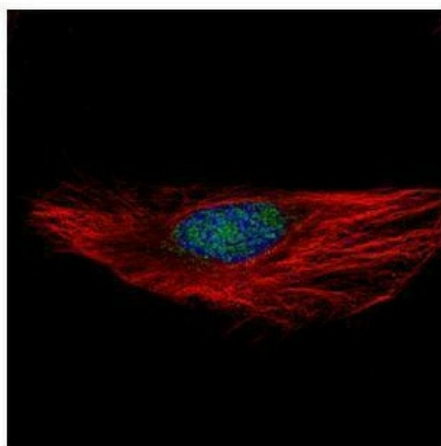


[View online »](#)

Product images:



Sample (30 ug of whole cell lysate). A: 293T. 7.5% SDS PAGE. TA309021 diluted at 1:1000



Confocal immunofluorescence analysis (Olympus FV10i) of paraformaldehyde-fixed HeLa, using RBM28 (TA309021) antibody (Green) at 1:100 dilution. Alpha-tubulin filaments were labeled with anti-alpha tubulin antibody (Red) at 1:2500.