

Product datasheet for **TA309019**

PRPF39 Rabbit Polyclonal Antibody

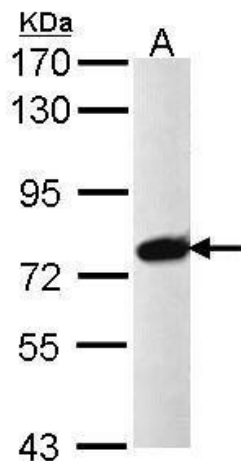
Product data:

Product Type:	Primary Antibodies
Applications:	IHC, WB
Recommended Dilution:	IHC:1:100-1:1000; WB:1:500-1:10000
Reactivity:	Human (Predicted: Mouse, Bovine)
Host:	Rabbit
Isotype:	IgG
Clonality:	Polyclonal
Immunogen:	Recombinant fragment corresponding to a region within amino acids 146 and 415 of PRPF39 (Uniprot ID#Q86UA1)
Formulation:	1XPBS, 1% BSA, 20% Glycerol (pH7). 0.01% Thimerosal was added as a preservative.
Concentration:	lot specific
Purification:	Purified by antigen-affinity chromatography.
Conjugation:	Unconjugated
Storage:	Store at -20°C as received.
Stability:	Stable for 12 months from date of receipt.
Predicted Protein Size:	78 kDa
Gene Name:	pre-mRNA processing factor 39
Database Link:	NP_060392 Entrez Gene 328110 Mouse Entrez Gene 55015 Human Q86UA1
Synonyms:	FLJ11128; FLJ20666; FLJ45460; MGC149842; MGC149843
Note:	Seq homology of immunogen across species: Mouse (98%), Bovine (99%)

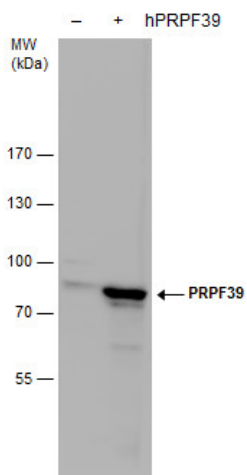


[View online »](#)

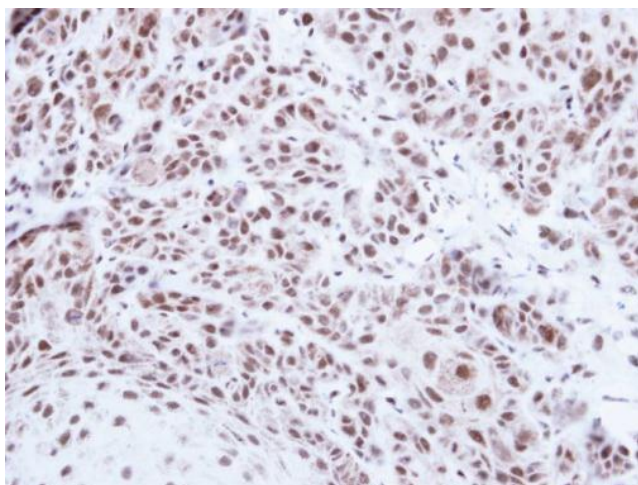
Product images:



Sample (30 ug of whole cell lysate). A: Raji. 7.5% SDS PAGE. TA309019 diluted at 1:1000.



PRPF39 antibody detects PRPF39 protein by western blot analysis. Non-transfected (-) and PRPF39-transfected (+, including Flag-tag) 293T whole cell extracts (30 ug) were separated by 7.5% SDS-PAGE, and the membrane was blotted with PRPF39 antibody (TA3090



Immunohistochemical analysis of paraffin-embedded Cal27 xenograft, using PRPF39 (TA309019) antibody at 1:500 dilution.