

Product datasheet for **TA309017**

CMTM6 Rabbit Polyclonal Antibody

Product data:

Product Type:	Primary Antibodies
Applications:	IF, IHC, WB
Recommended Dilution:	ICC/IF:1:100-1:1000; IHC:1:100-1:1000; WB:1:500-1:3000
Reactivity:	Human (Predicted: Rat, Chimpanzee, Rhesus Monkey)
Host:	Rabbit
Isotype:	IgG
Clonality:	Polyclonal
Immunogen:	Synthetic peptide corresponding to a region within amino acids 119 and 183 of CMTM6 (Uniprot ID#Q9NX76)
Formulation:	1XPBS, 20% Glycerol (pH7). 0.025% ProClin 300 was added as a preservative.
Concentration:	lot specific
Purification:	Purified by antigen-affinity chromatography.
Conjugation:	Unconjugated
Storage:	Store at -20°C as received.
Stability:	Stable for 12 months from date of receipt.
Predicted Protein Size:	20 kDa
Gene Name:	CKLF like MARVEL transmembrane domain containing 6
Database Link:	NP_060271 Entrez Gene 316035 RatEntrez Gene 54918 Human Q9NX76
Background:	This gene belongs to the chemokine-like factor gene superfamily, a novel family that is similar to the chemokine and transmembrane 4 superfamilies. This gene is one of several chemokine-like factor genes located in a cluster on chromosome 3. This gene is widely expressed in many tissues, but the exact function of the encoded protein is unknown. [provided by RefSeq]
Synonyms:	CKLFSF6; PRO2219

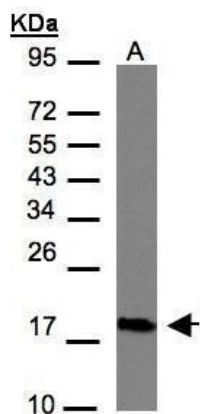


[View online »](#)

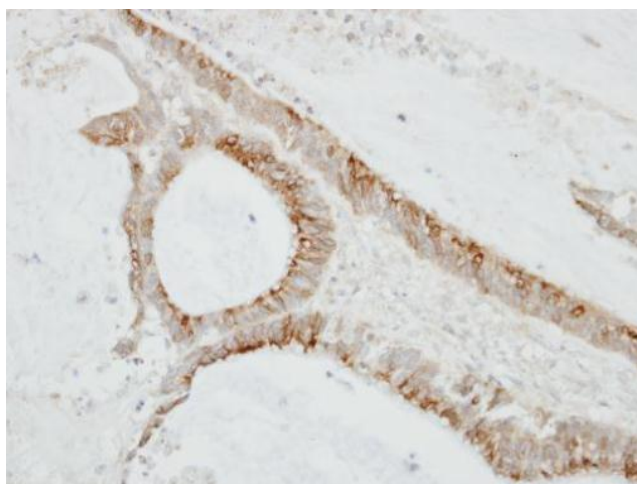
Note: Seq homology of immunogen across species: Rat (87%), Rhesus Monkey (100%), Chimpanzee (100%)

Protein Families: Transmembrane

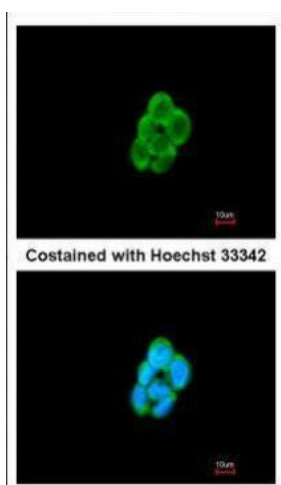
Product images:



Sample (30 ug of whole cell lysate). A:Hep G2.
12% SDS PAGE. TA309017 diluted at 1:1000



Immunohistochemical analysis of paraffin-embedded TW2.6 xenograft, using CMTM6 (TA309017) antibody at 1:100 dilution.



Immunofluorescence analysis of methanol-fixed A431, using CMTM6 (TA309017) antibody at 1:200 dilution.