

## Product datasheet for **TA309016**

### TMED9 Rabbit Polyclonal Antibody

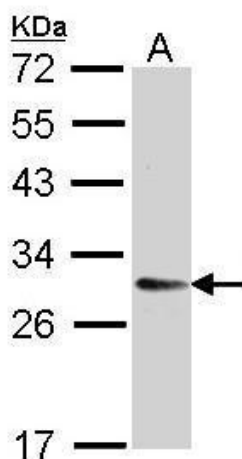
#### Product data:

Product Type:	Primary Antibodies
Applications:	IHC, WB
Recommended Dilution:	IHC:1:100-1:1000; WB:1:1000-1:10000
Reactivity:	Human (Predicted: Rat, Bovine, Rhesus Monkey, Mouse)
Host:	Rabbit
Isotype:	IgG
Clonality:	Polyclonal
Immunogen:	Recombinant fragment corresponding to a region within amino acids 1 and 230 of TMED9 (Uniprot ID#Q9BVK6)
Formulation:	0.1M Tris, 0.1M Glycine, 10% Glycerol (pH7). 0.01% Thimerosal was added as a preservative.
Concentration:	lot specific
Purification:	Purified by antigen-affinity chromatography.
Conjugation:	Unconjugated
Storage:	Store at -20°C as received.
Stability:	Stable for 12 months from date of receipt.
Predicted Protein Size:	27 kDa
Gene Name:	transmembrane p24 trafficking protein 9
Database Link:	<a href="#">NP_059980</a> <a href="#">Entrez Gene 67511 Mouse</a> <a href="#">Entrez Gene 361207 Rat</a> <a href="#">Entrez Gene 54732 Human</a> <a href="#">Q9BVK6</a>
Synonyms:	GMP25; HSGP25L2G; p24a2; p24alpha2; p25
Note:	Seq homology of immunogen across species: Mouse (100%), Rat (100%), Rhesus Monkey (100%), Bovine (100%)
Protein Families:	Transmembrane

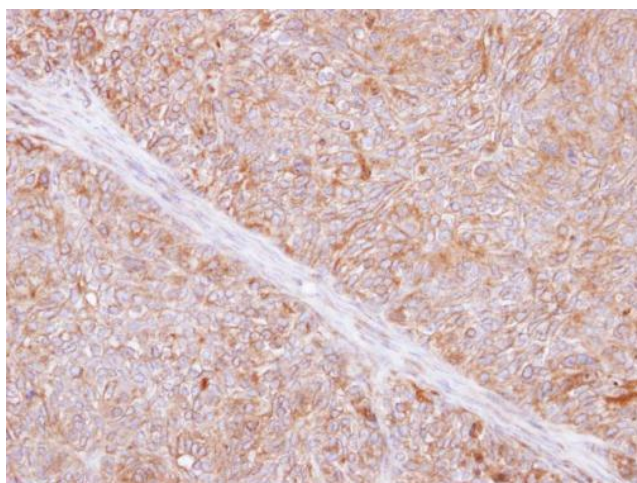


[View online »](#)

## Product images:



Sample (30 ug of whole cell lysate). A: H1299. 12% SDS PAGE. TA309016 diluted at 1:5000.



Immunohistochemical analysis of paraffin-embedded DLD-1 xenograft, using TMED9 (TA309016) antibody at 1:500 dilution.