

Product datasheet for **TA309015**

DDX56 Rabbit Polyclonal Antibody

Product data:

| | |
|-------------------------|---|
| Product Type: | Primary Antibodies |
| Applications: | IF, IHC, WB |
| Recommended Dilution: | ICC/IF:1:100-1:1000; IHC:1:100-1:1000; WB:1:500-1:3000 |
| Reactivity: | Human |
| Host: | Rabbit |
| Isotype: | IgG |
| Clonality: | Polyclonal |
| Immunogen: | Recombinant protein fragment contain a sequence corresponding to a region within amino acids 201 and 393 of DDX56 |
| Formulation: | 0.1M Tris, 0.1M Glycine, 20% Glycerol (pH7). 0.01% Thimerosal was added as a preservative. |
| Concentration: | lot specific |
| Purification: | Purified by antigen-affinity chromatography. |
| Conjugation: | Unconjugated |
| Storage: | Store at -20°C as received. |
| Stability: | Stable for 12 months from date of receipt. |
| Predicted Protein Size: | 62 kDa |
| Gene Name: | DEAD-box helicase 56 |
| Database Link: | NP_061955 Entrez Gene 54606 Human Q9NY93 |



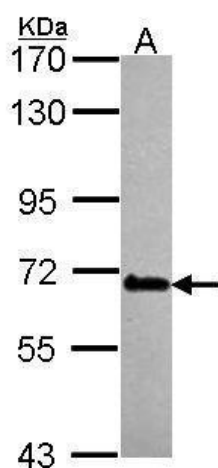
[View online »](#)

Background:

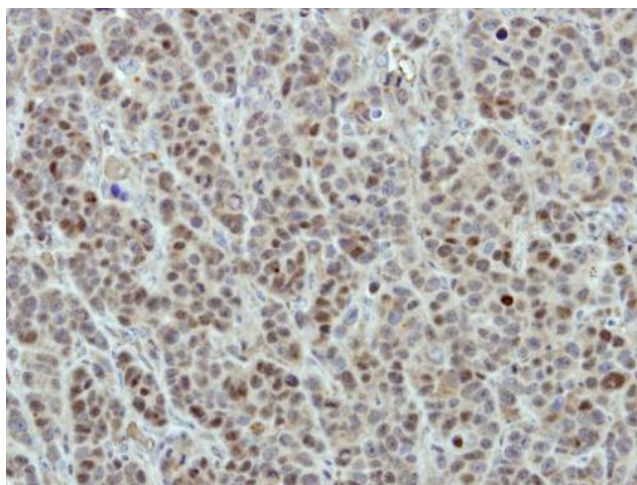
This gene encodes a member of the DEAD box protein family. DEAD box proteins, characterized by the conserved motif Asp-Glu-Ala-Asp (DEAD), are putative RNA helicases. They are implicated in a number of cellular processes involving alteration of RNA secondary structure such as translation initiation, nuclear and mitochondrial splicing, and ribosome and spliceosome assembly. Based on their distribution patterns, some members of this family are believed to be involved in embryogenesis, spermatogenesis, and cellular growth and division. The protein encoded by this gene shows ATPase activity in the presence of polynucleotides and associates with nucleoplasmic 65S preribosomal particles. This gene may be involved in ribosome synthesis, most likely during assembly of the large 60S ribosomal subunit. [provided by RefSeq]

Synonyms:

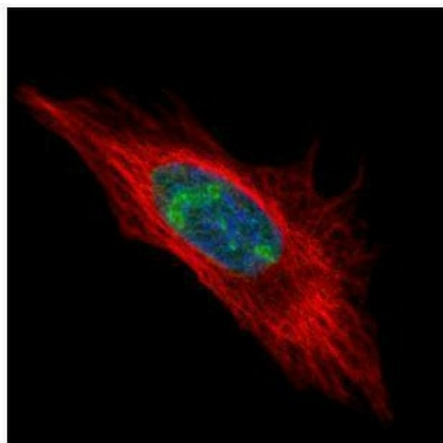
DDX21; DDX26; NOH61

Product images:

Sample (30 ug of whole cell lysate). A: HeLa. 7.5% SDS PAGE. TA309015 diluted at 1:1000.



Immunohistochemical analysis of paraffin-embedded MCF7 xenograft, using DDX56 (TA309015) antibody at 1:500 dilution.



Confocal immunofluorescence analysis (Olympus FV10i) of paraformaldehyde-fixed HeLa, using DDX56 (TA309015) antibody (Green) at 1:500 dilution. Alpha-tubulin filaments were labeled with anti-alpha tubulin antibody (Red) at 1:2000.