

Product datasheet for **TA309011**

NLK Rabbit Polyclonal Antibody

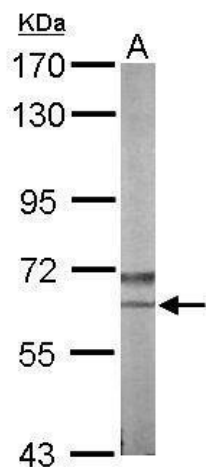
Product data:

Product Type:	Primary Antibodies
Applications:	IF, IHC, WB
Recommended Dilution:	ICC/IF:1:100-1:1000; IHC:1:100-1:1000; WB:1:500-1:3000
Reactivity:	Human, Mouse (Predicted: Rat, Bovine)
Host:	Rabbit
Isotype:	IgG
Clonality:	Polyclonal
Immunogen:	Recombinant fragment corresponding to a region within amino acids 234 and 527 of NLK (Uniprot ID#Q9UBE8)
Formulation:	0.1M Tris, 0.1M Glycine, 10% Glycerol (pH7). 0.01% Thimerosal was added as a preservative.
Purification:	Purified by antigen-affinity chromatography.
Conjugation:	Unconjugated
Storage:	Store at -20°C as received.
Stability:	Stable for 12 months from date of receipt.
Predicted Protein Size:	58 kDa
Gene Name:	nemo like kinase
Database Link:	NP_057315 Entrez Gene 18099 Mouse Entrez Gene 497961 Rat Entrez Gene 51701 Human Q9UBE8
Synonyms:	DKFZp761G1211; FLJ21033
Note:	Seq homology of immunogen across species: Rat (100%), Bovine (100%)
Protein Families:	Druggable Genome, Protein Kinase, Transcription Factors
Protein Pathways:	Adherens junction, MAPK signaling pathway, Wnt signaling pathway

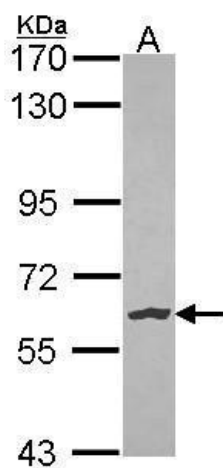


[View online »](#)

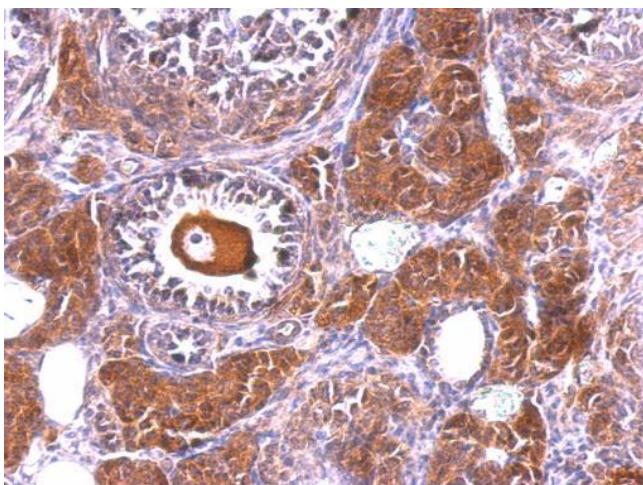
Product images:



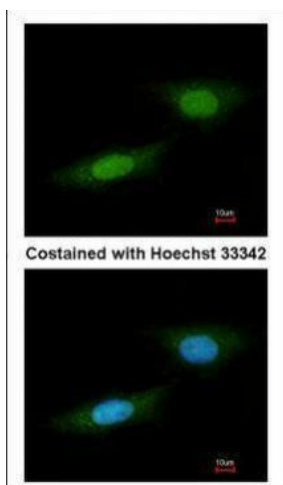
Sample (50 ug of whole cell lysate). A: Mouse brain. 7.5% SDS PAGE. TA309011 diluted at 1:1000.



Sample (30 ug of whole cell lysate). A: HeLa. 7.5% SDS PAGE. NLK antibody. TA309011 diluted at 1:1000.



NLK antibody [N3C3] detects NLK protein at cytosol and nucleus on mouse ovary by immunohistochemical analysis. Sample: Paraffin-embedded mouse ovary. NLK antibody [N3C3] (TA309011) dilution: 1:500.



Immunofluorescence analysis of paraformaldehyde-fixed HeLa, using NLK (TA309011) antibody at 1:100 dilution.