

Product datasheet for **TA309009**

LRP12 Rabbit Polyclonal Antibody

Product data:

Product Type:	Primary Antibodies
Applications:	WB
Recommended Dilution:	WB:1:500-1:3000
Reactivity:	Human (Predicted: Bovine, Rhesus Monkey, Mouse)
Host:	Rabbit
Isotype:	IgG
Clonality:	Polyclonal
Immunogen:	Synthetic peptide corresponding to a region within amino acids 795 and 859 of LRP12 (Uniprot ID#Q9Y561)
Formulation:	0.1M Tris, 0.1M Glycine, 10% Glycerol (pH7). 0.01% Thimerosal was added as a preservative.
Concentration:	lot specific
Purification:	Purified by antigen-affinity chromatography.
Conjugation:	Unconjugated
Storage:	Store at -20°C as received.
Stability:	Stable for 12 months from date of receipt.
Predicted Protein Size:	95 kDa
Gene Name:	LDL receptor related protein 12
Database Link:	NP_001129175 Entrez Gene 239393 Mouse Entrez Gene 29967 Human Q9Y561
Background:	This gene was identified by its differential expression in cancer cells. The product of this gene is predicted to be a transmembrane protein. The level of this protein was found to be lower in tumor derived cell lines compared to normal cells. This gene was thus proposed to be a candidate tumor suppressor gene. Two transcript variants encoding different isoforms have been found for this gene. [provided by RefSeq]
Synonyms:	ST7

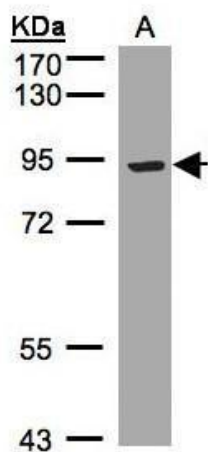


[View online »](#)

Note: Seq homology of immunogen across species: Mouse (87%), Rhesus Monkey (100%), Bovine (93%)

Protein Families: Druggable Genome, Transmembrane

Product images:



Sample (30 ug whole cell lysate). A:Hep G2. 7.5% SDS PAGE. TA309009 diluted at 1:1000