

Product datasheet for **TA309007**

SERP1 Rabbit Polyclonal Antibody

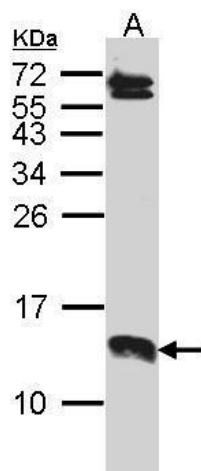
Product data:

Product Type:	Primary Antibodies
Applications:	IF, WB
Recommended Dilution:	ICC/IF:1:100-1:1000; WB:1:500-1:3000
Reactivity:	Human (Predicted: Mouse, Rat, Zebrafish, Xenopus, Pig, Bovine, X. tropicalis)
Host:	Rabbit
Isotype:	IgG
Clonality:	Polyclonal
Immunogen:	Synthetic peptide corresponding to a region within amino acids 1 and 51 of SERP1 (Uniprot ID#Q9Y6X1)
Formulation:	1XPBS, 20% Glycerol (pH7). 0.01% Thimerosal was added as a preservative.
Concentration:	lot specific
Purification:	Purified by antigen-affinity chromatography.
Conjugation:	Unconjugated
Storage:	Store at -20°C as received.
Stability:	Stable for 12 months from date of receipt.
Predicted Protein Size:	7 kDa
Gene Name:	stress-associated endoplasmic reticulum protein 1
Database Link:	NP_055260 Entrez Gene 28146 MouseEntrez Gene 80881 RatEntrez Gene 27230 Human Q9Y6X1
Synonyms:	RAMP4
Note:	Seq homology of immunogen across species: Mouse (100%), Rat (100%), Zebrafish (93%), Xenopus laevis (100%), Xenopus Tropicalis (100%), Pig (100%), Bovine (100%)
Protein Families:	Transmembrane

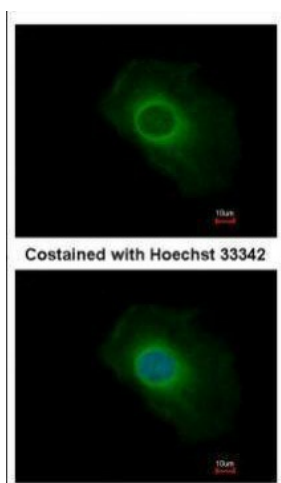


[View online »](#)

Product images:



Sample (30 ug of whole cell lysate). A: A431. 15% SDS PAGE. TA309007 diluted at 1:1000.



Immunofluorescence analysis of methanol-fixed HeLa, using SERP1 (TA309007) antibody at 1:500 dilution.