

Product datasheet for **TA309005**

FLRT1 Rabbit Polyclonal Antibody

Product data:

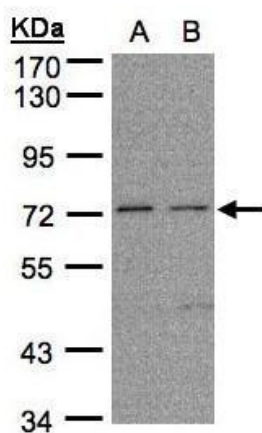
Product Type:	Primary Antibodies
Applications:	IF, IHC, WB
Recommended Dilution:	ICC/IF:1:100-1:1000; IHC:1:100-1:1000; WB:1:500-1:3000
Reactivity:	Human (Predicted: Mouse, Rat)
Host:	Rabbit
Isotype:	IgG
Clonality:	Polyclonal
Immunogen:	Recombinant fragment corresponding to a region within amino acids 35 and 255 of FLRT1 (Uniprot ID#Q9NZU1)
Formulation:	0.1M Tris, 0.1M Glycine, 10% Glycerol (pH7). 0.01% Thimerosal was added as a preservative.
Concentration:	lot specific
Purification:	Purified by antigen-affinity chromatography.
Conjugation:	Unconjugated
Storage:	Store at -20°C as received.
Stability:	Stable for 12 months from date of receipt.
Predicted Protein Size:	74 kDa
Gene Name:	fibronectin leucine rich transmembrane protein 1
Database Link:	NP_037412 Entrez Gene 396184 MouseEntrez Gene 499308 RatEntrez Gene 23769 Human Q9NZU1
Background:	This gene encodes a member of the fibronectin leucine rich transmembrane protein (FLRT) family. The family members may function in cell adhesion and/or receptor signalling. Their protein structures resemble small leucine-rich proteoglycans found in the extracellular matrix. The encoded protein shares sequence similarity with two other family members, FLRT2 and FLRT3. This gene is expressed in kidney and brain. [provided by RefSeq]
Synonyms:	SPG68
Note:	Seq homology of immunogen across species: Mouse (100%), Rat (100%)



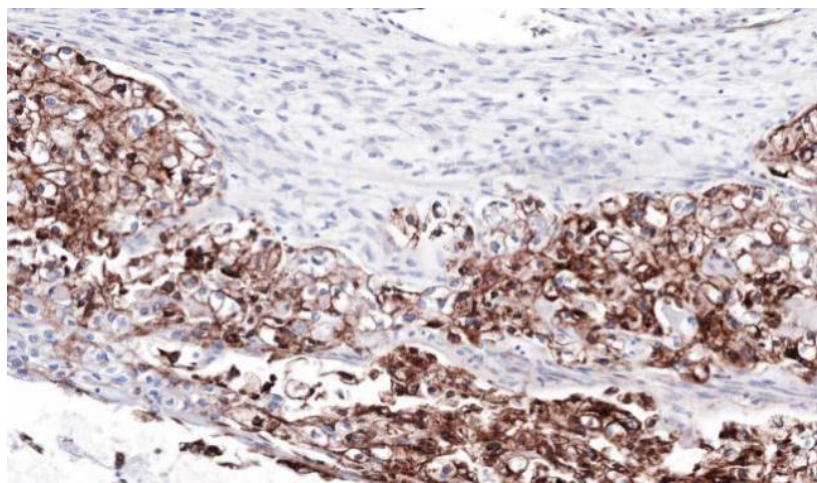
[View online »](#)

Protein Families: Druggable Genome, Transmembrane

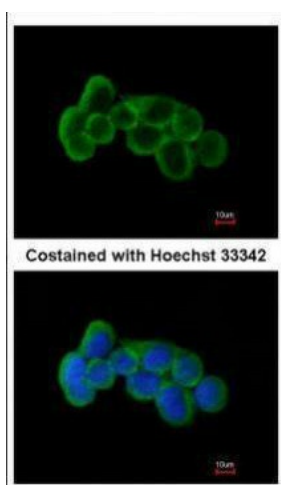
Product images:



Sample (30ug whole cell lysate). A: H1299. B: HeLa S3. 7.5% SDS PAGE. TA309005 diluted at 1:1000



Immunohistochemical analysis of paraffin-embedded OVCA, using FLRT1 (TA309005) antibody at 1:100 dilution.



Immunofluorescence analysis of methanol-fixed A431, using FLRT1 (TA309005) antibody at 1:200 dilution.