

Product datasheet for **TA309004**

DDAH1 Rabbit Polyclonal Antibody

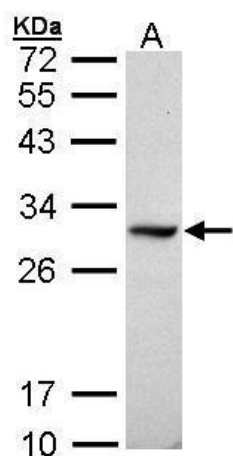
Product data:

Product Type:	Primary Antibodies
Applications:	IF, WB
Recommended Dilution:	ICC/IF:1:100-1:1000; WB:1:500-1:3000
Reactivity:	Human (Predicted: Bovine, Rhesus Monkey)
Host:	Rabbit
Isotype:	IgG
Clonality:	Polyclonal
Immunogen:	Synthetic peptide corresponding to a region within amino acids 223 and 285 of DDAH1 (Uniprot ID#O94760)
Formulation:	1XPBS, 10% Glycerol (pH7). 0.01% Thimerosal was added as a preservative.
Concentration:	lot specific
Purification:	Purified by antigen-affinity chromatography.
Conjugation:	Unconjugated
Storage:	Store at -20°C as received.
Stability:	Stable for 12 months from date of receipt.
Predicted Protein Size:	31 kDa
Gene Name:	dimethylarginine dimethylaminohydrolase 1
Database Link:	NP_001127917 Entrez Gene 23576 Human O94760
Background:	This gene belongs to the dimethylarginine dimethylaminohydrolase (DDAH) gene family. The encoded enzyme plays a role in nitric oxide generation by regulating cellular concentrations of methylarginines, which in turn inhibit nitric oxide synthase activity. [provided by RefSeq]
Synonyms:	DDAH; DDAH-1; DDAHI; HEL-S-16
Note:	Seq homology of immunogen across species: Rhesus Monkey (100%), Bovine (92%)

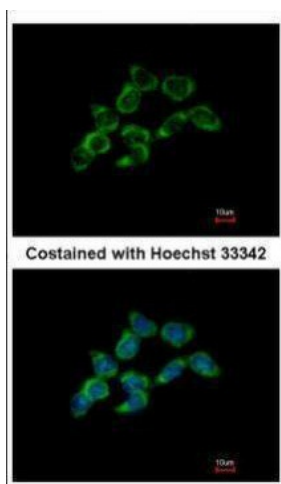


[View online »](#)

Product images:



Sample (30 ug of whole cell lysate). A: Raji. 12% SDS PAGE. TA309004 diluted at 1:1000.



Immunofluorescence analysis of methanol-fixed HCT116, using DDAH1 (TA309004) antibody at 1:500 dilution.