

Product datasheet for **TA309003**

SEC61G Rabbit Polyclonal Antibody

Product data:

Product Type:	Primary Antibodies
Applications:	WB
Recommended Dilution:	WB:1:500-1:3000
Reactivity:	Human (Predicted: Rat, Zebrafish, Dog, Bovine, Rhesus Monkey, Mouse)
Host:	Rabbit
Isotype:	IgG
Clonality:	Polyclonal
Immunogen:	Synthetic peptide corresponding to a region within amino acids 2 and 66 of Sec61 gamma
Formulation:	1XPBS, 20% Glycerol (pH7). 0.01% Thimerosal was added as a preservative.
Concentration:	lot specific
Purification:	Affinity purified by Protein A.
Conjugation:	Unconjugated
Storage:	Store at -20°C as received.
Stability:	Stable for 12 months from date of receipt.
Predicted Protein Size:	8 kDa
Gene Name:	Sec61 translocon gamma subunit
Database Link:	NP_001012474 Entrez Gene 20335 MouseEntrez Gene 689134 RatEntrez Gene 404017 DogEntrez Gene 23480 Human P60059
Background:	The Sec61 complex is the central component of the protein translocation apparatus of the endoplasmic reticulum (ER) membrane. Oligomers of the Sec61 complex form a transmembrane channel where proteins are translocated across and integrated into the ER membrane. This complex consists of three membrane proteins- alpha, beta, and gamma. This gene encodes the gamma-subunit protein. Alternatively spliced transcript variants encoding the same protein have been identified. [provided by RefSeq]
Synonyms:	SSS1



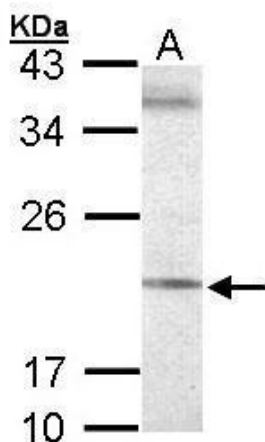
[View online »](#)

Note: Seq homology of immunogen across species: Mouse (100%), Rat (100%), Zebrafish (100%), Dog (100%), Rhesus Monkey (100%), Bovine (100%)

Protein Families: Transmembrane

Protein Pathways: Vibrio cholerae infection

Product images:



Sample (30 ug of whole cell lysate). A: 293T. 12% SDS PAGE. TA309003 diluted at 1:500.