

## Product datasheet for **TA309002**

### Frequenin (NCS1) Rabbit Polyclonal Antibody

#### Product data:

Product Type:	Primary Antibodies
Applications:	IF, IHC, WB
Recommended Dilution:	ICC/IF:1:100-1:1000; WB:1:100-1:1000
Reactivity:	Human (Predicted: Mouse, Xenopus, Bovine, X. tropicalis)
Host:	Rabbit
Isotype:	IgG
Clonality:	Polyclonal
Immunogen:	Recombinant protein fragment contain a sequence corresponding to a region within amino acids 1 and 138 of NCS1
Formulation:	0.1M Tris, 0.1M Glycine, 10% Glycerol (pH7). 0.01% Thimerosal was added as a preservative.
Concentration:	lot specific
Purification:	Purified by antigen-affinity chromatography.
Conjugation:	Unconjugated
Storage:	Store at -20°C as received.
Stability:	Stable for 12 months from date of receipt.
Predicted Protein Size:	22 kDa
Gene Name:	neuronal calcium sensor 1
Database Link:	<a href="#">NP_001122298</a> <a href="#">Entrez Gene 14299 Mouse</a> <a href="#">Entrez Gene 23413 Human</a> <a href="#">P62166</a>
Background:	This gene is a member of the neuronal calcium sensor gene family, which encode calcium-binding proteins expressed predominantly in neurons. The protein encoded by this gene regulates G protein-coupled receptor phosphorylation in a calcium-dependent manner and can substitute for calmodulin. The protein is associated with secretory granules and modulates synaptic transmission and synaptic plasticity. Multiple transcript variants encoding different isoforms have been found for this gene. [provided by RefSeq]
Synonyms:	FLUP; FREQ

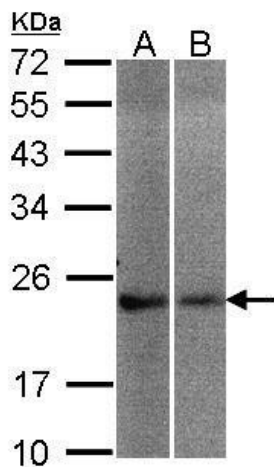


[View online »](#)

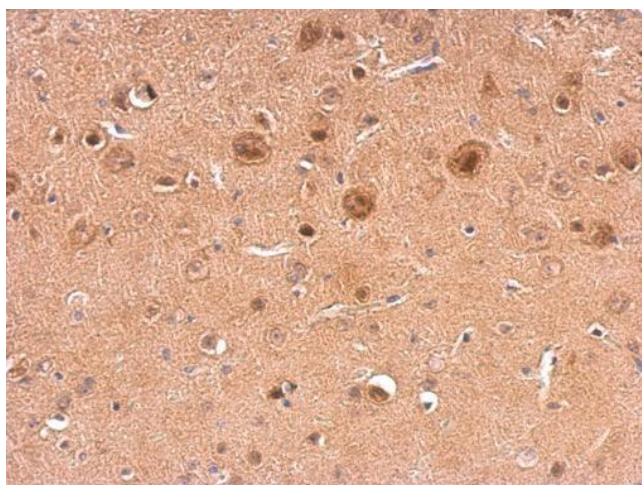
**Note:** Seq homology of immunogen across species: Mouse (100%), Xenopus laevis (99%), Bovine (99%), Xenopus tropicalis (100%)

**Protein Families:** Druggable Genome

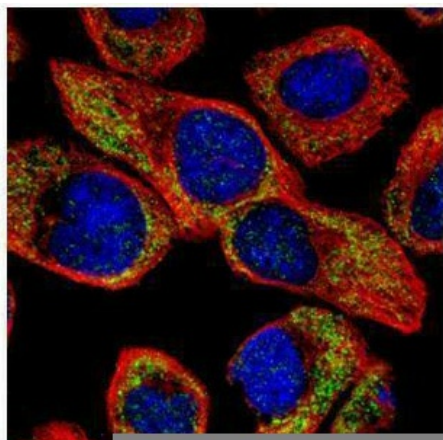
**Product images:**



Sample (30 ug of whole cell lysate). A:A431. B:Hep G2. 12% SDS PAGE. TA309002 diluted at 1:200



NCS1 antibody detects NCS1 protein at on mouse fore brain by immunohistochemical analysis. Sample: Paraffin-embedded mouse fore brain. NCS1 antibody (TA309002) dilution: 1:500.



Confocal immunofluorescence analysis (Olympus FV10i) of methanol-fixed A431, using NCS1 (TA309002) antibody (Green) at 1:100 dilution. Alpha-tubulin filaments were labeled with anti-alpha tubulin antibody (Red) at 1:500.