

Product datasheet for **TA308999**

Phospholipase c eta 1 (PLCH1) Rabbit Polyclonal Antibody

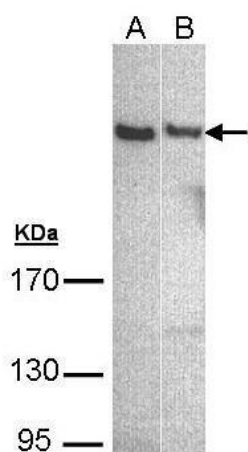
Product data:

Product Type:	Primary Antibodies
Applications:	WB
Recommended Dilution:	WB:1:500-1:3000
Reactivity:	Human (Predicted: Mouse, Rat)
Host:	Rabbit
Isotype:	IgG
Clonality:	Polyclonal
Immunogen:	Recombinant fragment corresponding to a region within amino acids 548 and 871 of PLCH1 (Uniprot ID#Q4KWH8)
Formulation:	0.1M Tris, 0.1M Glycine, 10% Glycerol (pH7). 0.01% Thimerosal was added as a preservative.
Concentration:	lot specific
Purification:	Purified by antigen-affinity chromatography.
Conjugation:	Unconjugated
Storage:	Store at -20°C as received.
Stability:	Stable for 12 months from date of receipt.
Predicted Protein Size:	185 kDa
Gene Name:	phospholipase C eta 1
Database Link:	NP_001124433 Entrez Gene 269437 Mouse Entrez Gene 310463 Rat Entrez Gene 23007 Human Q4KWH8
Background:	PLCH1 is a member of the PLC-eta family of the phosphoinositide-specific phospholipase C (PLC) superfamily of enzymes that cleave phosphatidylinositol 4,5-bisphosphate (PtdIns(4,5)P ₂) to generate second messengers inositol 1,4,5-trisphosphate (IP ₃) and diacylglycerol (DAG) (Hwang et al., 2005 [PubMed 15702972]). [supplied by OMIM]
Synonyms:	PLCL3
Note:	Seq homology of immunogen across species: Mouse (99%), Rat (98%)
Protein Families:	Druggable Genome



[View online »](#)

Product images:



Sample (30 ug of whole cell lysate). A: A431. B: Hep G2. 5% SDS PAGE. TA308999 diluted at 1:500