

Product datasheet for **TA308997**

Trehalase (TREH) Rabbit Polyclonal Antibody

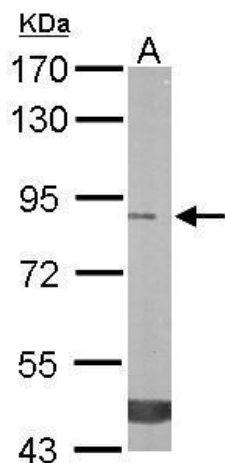
Product data:

Product Type:	Primary Antibodies
Applications:	IHC, WB
Recommended Dilution:	IHC:1:100-1:1000; WB:1:500-1:3000
Reactivity:	Human, Mouse (Predicted: Rabbit, Rat, Bovine)
Host:	Rabbit
Isotype:	IgG
Clonality:	Polyclonal
Immunogen:	Recombinant fragment corresponding to a region within amino acids 7 and 285 of Trehalase (Uniprot ID#O43280)
Formulation:	0.1M Tris, 0.1M Glycine, 10% Glycerol (pH7). 0.01% Thimerosal was added as a preservative.
Concentration:	lot specific
Purification:	Purified by antigen-affinity chromatography.
Conjugation:	Unconjugated
Storage:	Store at -20°C as received.
Stability:	Stable for 12 months from date of receipt.
Predicted Protein Size:	67 kDa
Gene Name:	trehalase
Database Link:	NP_009111 Entrez Gene 58866 MouseEntrez Gene 60576 RatEntrez Gene 11181 Human O43280
Background:	This gene encodes an enzyme that hydrolyses trehalose, a disaccharide formed from two glucose molecules found mainly in fungi, plants, and insects. A partial duplication of this gene is located adjacent to this locus on chromosome 11. [provided by RefSeq]
Synonyms:	TRE; TREA
Note:	Seq homology of immunogen across species: Rabbit (82%), Rat (80%), Bovine (82%)
Protein Pathways:	Starch and sucrose metabolism

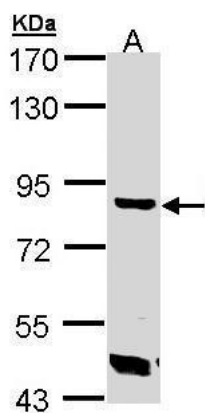


[View online »](#)

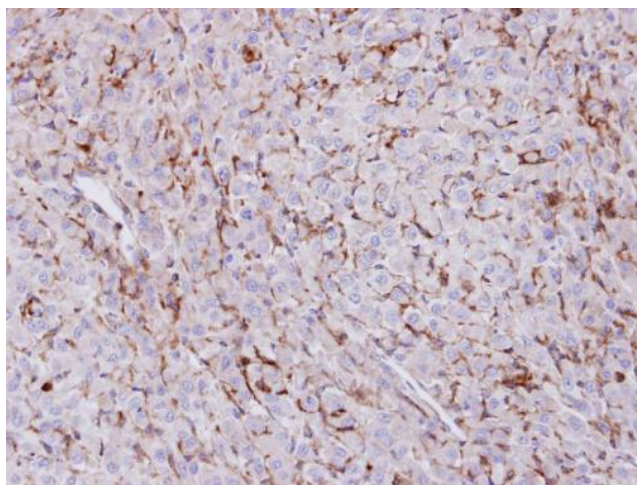
Product images:



Sample (50 ug of whole cell lysate). A: mouse stomach. 7.5% SDS PAGE. TA308997 diluted at 1:3000.



Sample (30 ug of whole cell lysate). A: A431. 7.5% SDS PAGE. TA308997 diluted at 1:1000



Immunohistochemical analysis of paraffin-embedded U87 xenograft, using Trehalase (TA308997) antibody at 1:100 dilution.