

Product datasheet for **TA308996**

ZPBP1 (ZPBP) Rabbit Polyclonal Antibody

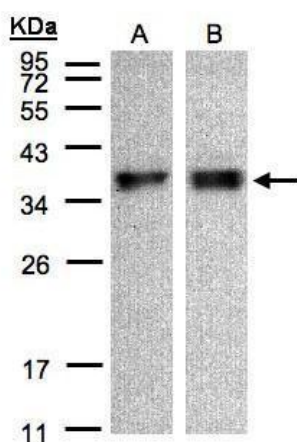
Product data:

Product Type:	Primary Antibodies
Applications:	IHC, WB
Recommended Dilution:	IHC:1:100-1:1000; WB:1:500-1:3000
Reactivity:	Human (Predicted: Mouse, Pig, Rat, Bovine)
Host:	Rabbit
Isotype:	IgG
Clonality:	Polyclonal
Immunogen:	Recombinant fragment contain a sequence corresponding to a region within amino acids 29 and 275 of ZPBP (Uniprot ID#Q9BS86)
Formulation:	0.1M Tris, 0.1M Glycine, 10% Glycerol (pH7). 0.01% Thimerosal was added as a preservative.
Concentration:	lot specific
Purification:	Purified by antigen-affinity chromatography.
Conjugation:	Unconjugated
Storage:	Store at -20°C as received.
Stability:	Stable for 12 months from date of receipt.
Predicted Protein Size:	40 kDa
Gene Name:	zona pellucida binding protein
Database Link:	NP_008940 Entrez Gene 53604 Mouse Entrez Gene 498415 Rat Entrez Gene 11055 Human Q9BS86
Background:	ZPBP is one of several proteins that are thought to participate in secondary binding between acrosome-reacted sperm and the egg-specific extracellular matrix, the zona pellucida (McLeskey et al., 1998 [PubMed 9378618]). [supplied by OMIM]
Synonyms:	ZPBP1
Note:	Seq homology of immunogen across species: Mouse (83%), Pig (87%), Rat (83%), Bovine (87%)
Protein Families:	Secreted Protein, Transmembrane

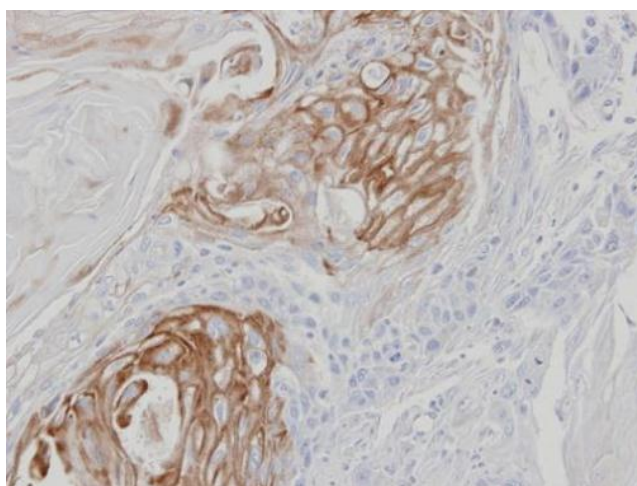


[View online »](#)

Product images:



Sample (30 ug of whole cell lysate). A:A431.
B:HeLa S3. 12% SDS PAGE. TA308996 diluted at
1:500



Immunohistochemical analysis of paraffin-
embedded SCC25 xenograft, using ZBP1
(TA308996) antibody at 1:100 dilution.