

## Product datasheet for **TA308994**

### TMED2 Rabbit Polyclonal Antibody

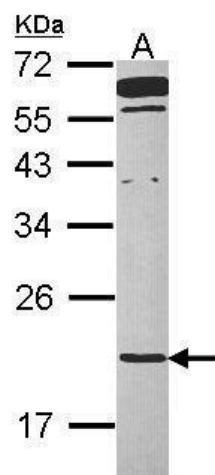
#### Product data:

|                         |  |
|-------------------------|--|
| Product Type:           | Primary Antibodies   |
| Applications:           | IHC, WB  |
| Recommended Dilution:   | IHC:1:100-1:1000; WB:1:500-1:3000  |
| Reactivity:             | Human (Predicted: Mouse, Rat, Xenopus, Chicken, Bovine)  |
| Host:                   | Rabbit   |
| Isotype:                | IgG  |
| Clonality:              | Polyclonal   |
| Immunogen:              | Recombinant fragment corresponding to a region within amino acids 9 and 201 of TMED2 (Uniprot ID#Q15363)   |
| Formulation:            | 0.1M Tris, 0.1M Glycine, 20% Glycerol (pH7). 0.01% Thimerosal was added as a preservative.   |
| Concentration:          | lot specific   |
| Purification:           | Purified by antigen-affinity chromatography.   |
| Conjugation:            | Unconjugated   |
| Storage:                | Store at -20°C as received.  |
| Stability:              | Stable for 12 months from date of receipt.   |
| Predicted Protein Size: | 23 kDa   |
| Gene Name:              | transmembrane p24 trafficking protein 2  |
| Database Link:          | <a href="#">NP_006806</a><br><a href="#">Entrez Gene 56334 Mouse</a> <a href="#">Entrez Gene 65165 Rat</a> <a href="#">Entrez Gene 10959 Human</a><br><a href="#">Q15363</a> |
| Synonyms:               | p24; P24A; p24b1; p24beta1; RNP24  |
| Note:                   | Seq homology of immunogen across species: Mouse (100%), Rat (100%), Xenopus laevis (100%), Chicken (100%), Bovine (100%)   |
| Protein Families:       | Transmembrane  |

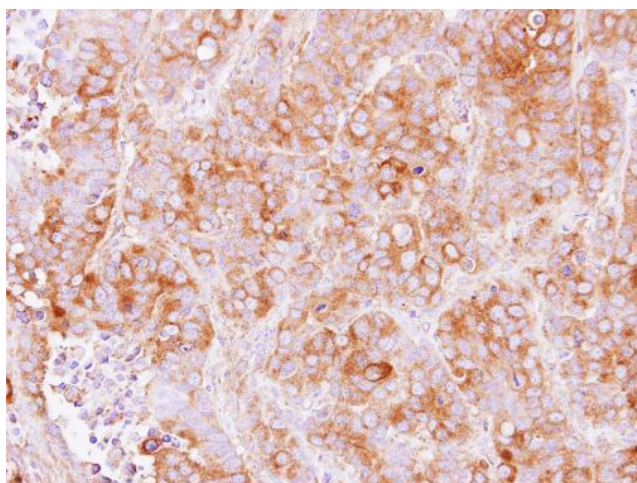


[View online »](#)

## Product images:



Sample (30 ug of whole cell lysate). A: Raji. 12% SDS PAGE. TA308994 diluted at 1:1000.



Immunohistochemical analysis of paraffin-embedded MCF7 xenograft, using TMED2 (TA308994) antibody at 1:500 dilution.