

Product datasheet for **TA308993**

ENTR1 Rabbit Polyclonal Antibody

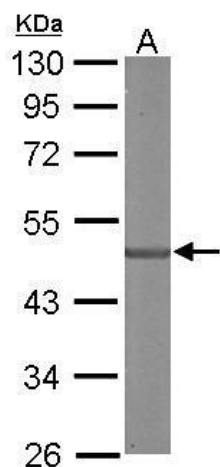
Product data:

Product Type:	Primary Antibodies
Applications:	WB
Recommended Dilution:	WB:1:500-1:3000
Reactivity:	Human, Mouse (Predicted: Bovine)
Host:	Rabbit
Isotype:	IgG
Clonality:	Polyclonal
Immunogen:	Recombinant fragment corresponding to a region within amino acids 218 and 435 of SDCCAG3 (Uniprot ID#Q96C92)
Formulation:	0.1M Tris, 0.1M Glycine, 10% Glycerol (pH7). 0.01% Thimerosal was added as a preservative.
Concentration:	lot specific
Purification:	Purified by antigen-affinity chromatography.
Conjugation:	Unconjugated
Storage:	Store at -20°C as received.
Stability:	Stable for 12 months from date of receipt.
Predicted Protein Size:	48 kDa
Gene Name:	serologically defined colon cancer antigen 3
Database Link:	NP_001034797 Entrez Gene 68112 Mouse Entrez Gene 10807 Human Q96C92
Synonyms:	NY-CO-3
Note:	Seq homology of immunogen across species: Bovine (89%)

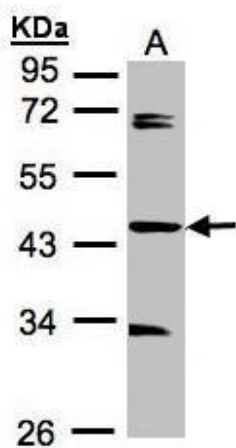


[View online »](#)

Product images:



Sample (50 ug of whole cell lysate). A: mouse brain. 10% SDS PAGE. TA308993 diluted at 1:3000.



Sample. A: 30ug of MOLT4 whole cell lysate. 10% SDS PAGE. TA308993 diluted at 1:1000