

Product datasheet for **TA308991**

UNC13B Rabbit Polyclonal Antibody

Product data:

Product Type:	Primary Antibodies
Applications:	IHC, WB
Recommended Dilution:	IHC:1:100-1:1000; WB:1:1000-1:10000
Reactivity:	Human (Predicted: Mouse, Rat, Bovine)
Host:	Rabbit
Isotype:	IgG
Clonality:	Polyclonal
Immunogen:	Recombinant fragment corresponding to a region within amino acids 462 and 749 of UNC13B (Uniprot ID#O14795)
Formulation:	0.1M Tris, 0.1M Glycine, 10% Glycerol (pH7). 0.01% Thimerosal was added as a preservative.
Concentration:	lot specific
Purification:	Purified by antigen-affinity chromatography.
Conjugation:	Unconjugated
Storage:	Store at -20°C as received.
Stability:	Stable for 12 months from date of receipt.
Predicted Protein Size:	181 kDa
Gene Name:	unc-13 homolog B (C. elegans)
Database Link:	NP_006368 Entrez Gene 22249 Mouse Entrez Gene 64830 Rat Entrez Gene 10497 Human O14795
Background:	This gene is expressed in the kidney cortical epithelial cells and is upregulated by hyperglycemia. The encoded protein shares a high level of similarity to the rat homolog, and contains 3 C2 domains and a diacylglycerol-binding C1 domain. Hyperglycemia increases the levels of diacylglycerol, which has been shown to induce apoptosis in cells transfected with this gene and thus contribute to the renal cell complications of hyperglycemia. Studies in other species also indicate a role for this protein in the priming step of synaptic vesicle exocytosis. [provided by RefSeq]
Synonyms:	MUNC13; UNC13; Unc13h2

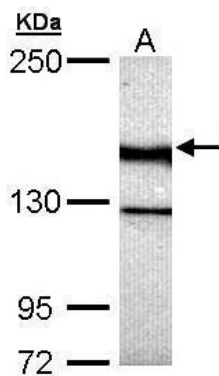


[View online »](#)

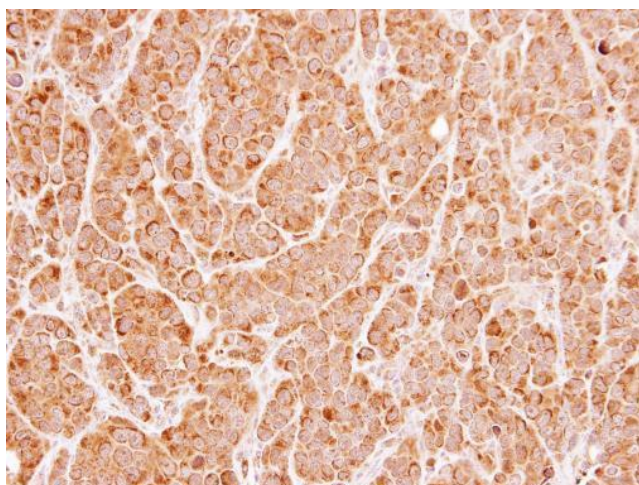
Note: Seq homology of immunogen across species: Mouse (98%), Rat (98%), Bovine (97%)

Protein Families: Druggable Genome

Product images:



Sample (30 ug of whole cell lysate). A: HeLa. 5% SDS PAGE. TA308991 diluted at 1:5000.



Immunohistochemical analysis of paraffin-embedded MCF7 xenograft, using UNC13B (TA308991) antibody at 1:500 dilution.