

Product datasheet for **TA308989**

TIMM17A Rabbit Polyclonal Antibody

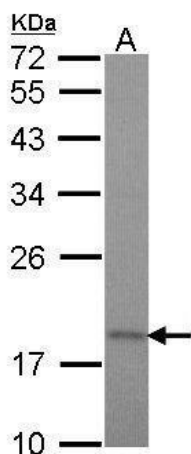
Product data:

Product Type:	Primary Antibodies
Applications:	IF, WB
Recommended Dilution:	ICC/IF:1:100-1:1000; WB:1:500-1:3000
Reactivity:	Human (Predicted: Rat, Chicken, Rhesus Monkey, Mouse)
Host:	Rabbit
Isotype:	IgG
Clonality:	Polyclonal
Immunogen:	Synthetic peptide corresponding to a region within amino acids 108 and 171 of TIM17 (Uniprot ID#Q99595)
Formulation:	0.1M Tris, 0.1M Glycine, 10% Glycerol (pH7). 0.01% Thimerosal was added as a preservative.
Concentration:	lot specific
Purification:	Purified by antigen-affinity chromatography.
Conjugation:	Unconjugated
Storage:	Store at -20°C as received.
Stability:	Stable for 12 months from date of receipt.
Predicted Protein Size:	18 kDa
Gene Name:	translocase of inner mitochondrial membrane 17 homolog A (yeast)
Database Link:	NP_006326 Entrez Gene 21854 Mouse Entrez Gene 54311 Rat Entrez Gene 10440 Human Q99595
Synonyms:	TIM17; TIM17A
Note:	Seq homology of immunogen across species: Mouse (100%), Rat (100%), Chicken (86%), Rhesus Monkey (100%)
Protein Families:	Transmembrane

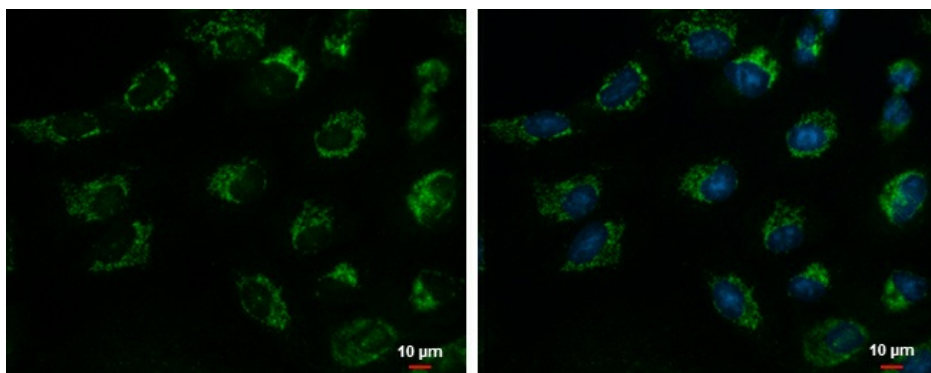


[View online »](#)

Product images:



Sample (30 ug of whole cell lysate). A: HeLa. 12% SDS PAGE. TA308989 diluted at 1:1000.



TIM17 antibody detects TIM17 protein at mitochondria by immunofluorescent analysis. Sample: A549 cells were fixed in ice-cold MeOH for 5 min. Green: TIM17 protein stained by TIM17 antibody (TA308989) diluted at 1:500. Blue: Hoechst 33342 staining. Scale b