

## Product datasheet for **TA308988**

### **TMEM147 Rabbit Polyclonal Antibody**

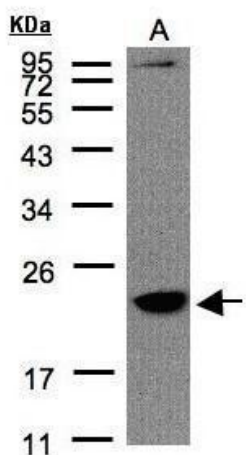
#### **Product data:**

<b>Product Type:</b>	Primary Antibodies
<b>Applications:</b>	IF, IHC, WB
<b>Recommended Dilution:</b>	ICC/IF:1:100-1:1000; IHC:1:100-1:1000; WB:1:500-1:3000
<b>Reactivity:</b>	Human, Mouse (Predicted: Rat, Zebrafish, Xenopus, Bovine, Rhesus Monkey, X. tropicalis)
<b>Host:</b>	Rabbit
<b>Isotype:</b>	IgG
<b>Clonality:</b>	Polyclonal
<b>Immunogen:</b>	Synthetic peptide corresponding to a region within amino acids 37 and 131 of Transmembrane protein 147 (Uniprot ID#Q9BVK8)
<b>Formulation:</b>	0.1M Tris, 0.1M Glycine, 10% Glycerol (pH7). 0.01% Thimerosal was added as a preservative.
<b>Concentration:</b>	lot specific
<b>Purification:</b>	Purified by antigen-affinity chromatography.
<b>Conjugation:</b>	Unconjugated
<b>Storage:</b>	Store at -20°C as received.
<b>Stability:</b>	Stable for 12 months from date of receipt.
<b>Predicted Protein Size:</b>	25 kDa
<b>Gene Name:</b>	transmembrane protein 147
<b>Database Link:</b>	<a href="#">NP_116024</a> <a href="#">Entrez Gene 69804 Mouse</a> <a href="#">Entrez Gene 292792 Rat</a> <a href="#">Entrez Gene 10430 Human</a> <a href="#">Q9BVK8</a>
<b>Synonyms:</b>	NIFIE14
<b>Note:</b>	Seq homology of immunogen across species: Rat (100%), Zebrafish (100%), Xenopus laevis (100%), Xenopus Tropicalis (100%), Rhesus Monkey (100%), Bovine (100%)
<b>Protein Families:</b>	Druggable Genome, GPCR, Transmembrane

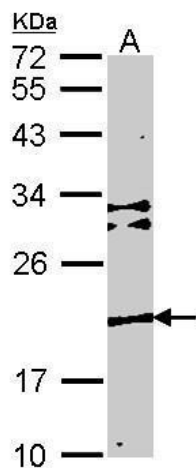


[View online »](#)

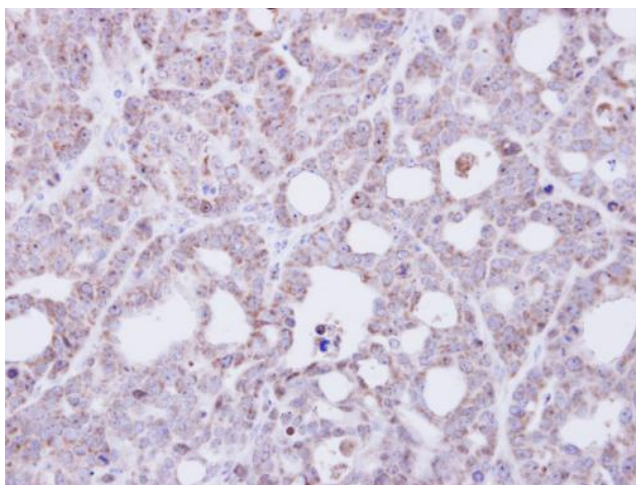
Product images:



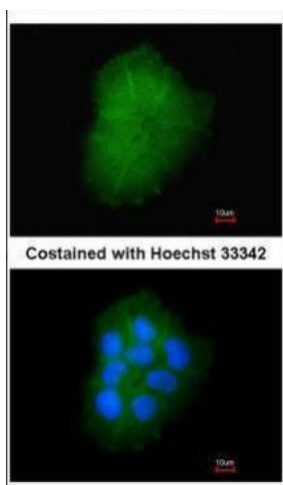
Sample (30 ug of whole cell lysate). A:Raji. 12% SDS PAGE. TA308988 diluted at 1:1500



Sample (30 ug of whole cell lysate). A: NIH-3T3. 12% SDS PAGE. Transmembrane protein 147 antibody. TA308988 diluted at 1:1000.



Immunohistochemical analysis of paraffin-embedded NCI-N87 xenograft, using Transmembrane protein 147 (TA308988) antibody at 1:500 dilution.



Immunofluorescence analysis of paraformaldehyde-fixed A431, using Transmembrane protein 147 (TA308988) antibody at 1:200 dilution.