

Product datasheet for **TA308986**

Tubulin (TUBA1B) Rabbit Polyclonal Antibody

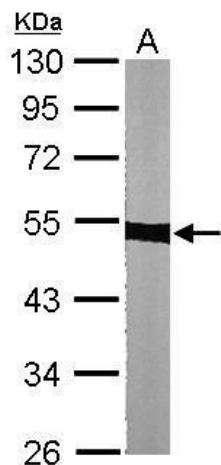
Product data:

Product Type:	Primary Antibodies
Applications:	IF, IHC, WB
Recommended Dilution:	ICC/IF:1:100-1:1000; IHC:1:100-1:1000; WB:1:500-1:3000
Reactivity:	Human, Mouse (Predicted: Rat, Pig, Chimpanzee, Bovine, Rhesus Monkey)
Host:	Rabbit
Isotype:	IgG
Clonality:	Polyclonal
Immunogen:	Recombinant fragment contain a sequence corresponding to a region within amino acids 118 and 365 of alpha Tubulin (Uniprot ID#P68363)
Formulation:	0.1M Tris, 0.1M Glycine, 10% Glycerol (pH7). 0.01% Thimerosal was added as a preservative.
Concentration:	lot specific
Purification:	Purified by antigen-affinity chromatography.
Conjugation:	Unconjugated
Storage:	Store at -20°C as received.
Stability:	Stable for 12 months from date of receipt.
Predicted Protein Size:	50 kDa
Gene Name:	tubulin alpha 1b
Database Link:	NP_006073 Entrez Gene 22143 Mouse Entrez Gene 500929 Rat Entrez Gene 10376 Human P68363
Synonyms:	K-ALPHA-1
Note:	Seq homology of immunogen across species: Rat (100%), Pig (100%), Rhesus Monkey (100%), Chimpanzee (100%), Bovine (100%)
Protein Families:	Druggable Genome
Protein Pathways:	Gap junction, Pathogenic Escherichia coli infection

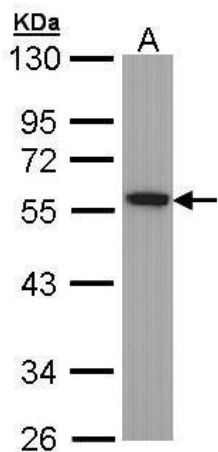


[View online »](#)

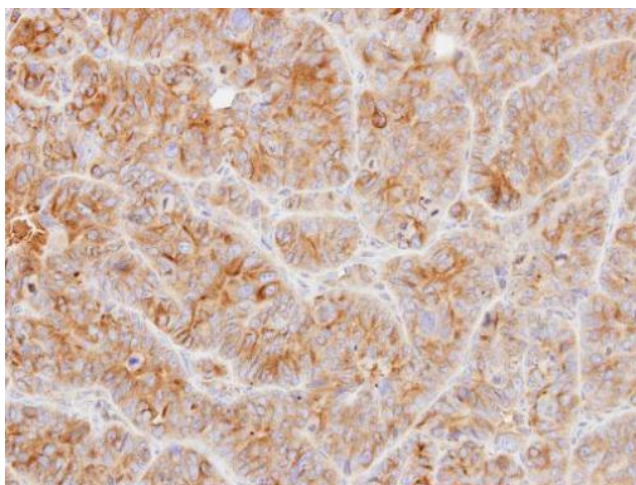
Product images:



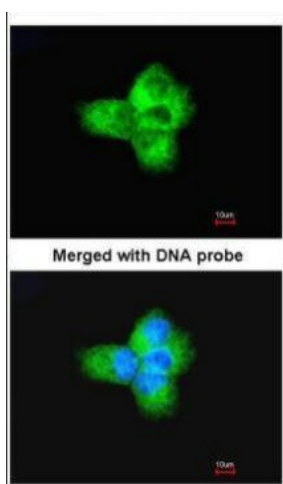
Sample (30 ug of whole cell lysate). A: NIH-3T3. 10% SDS PAGE. TA308986 diluted at 1:1000.



Sample (30 ug of whole cell lysate). A: HeLa. 10% SDS PAGE. TA308986 diluted at 1:1000.



Immunohistochemical analysis of paraffin-embedded SW480 xenograft, using alpha Tubulin (TA308986) antibody at 1:500 dilution.



Immunofluorescence analysis of paraformaldehyde-fixed A431, using Tubulin alpha-1B (TA308986) antibody at 1:200 dilution.