

## Product datasheet for **TA308985**

### FIG4 Rabbit Polyclonal Antibody

#### Product data:

Product Type:	Primary Antibodies
Applications:	IF, IHC, WB
Recommended Dilution:	ICC/IF:1:100-1:1000; IHC:1:100-1:1000; WB:1:500-1:3000
Reactivity:	Human (Predicted: Chimpanzee)
Host:	Rabbit
Isotype:	IgG
Clonality:	Polyclonal
Immunogen:	Recombinant fragment corresponding to a region within amino acids 135 and 430 of FIG4 (Uniprot ID#Q92562)
Formulation:	0.1M Tris, 0.1M Glycine, 10% Glycerol (pH7). 0.01% Thimerosal was added as a preservative.
Purification:	Purified by antigen-affinity chromatography.
Conjugation:	Unconjugated
Storage:	Store at -20°C as received.
Stability:	Stable for 12 months from date of receipt.
Predicted Protein Size:	104 kDa
Gene Name:	FIG4 phosphoinositide 5-phosphatase
Database Link:	<a href="#">NP_055660</a> <a href="#">Entrez Gene 9896 Human Q92562</a>
Background:	The protein encoded by this gene belongs to the SAC domain-containing protein gene family. The SAC domain, approximately 400 amino acids in length and consisting of seven conserved motifs, has been shown to possess phosphoinositide phosphatase activity. The yeast homolog, Sac1p, is involved in the regulation of various phosphoinositides, and affects diverse cellular functions such as actin cytoskeleton organization, Golgi function, and maintenance of vacuole morphology. Membrane-bound phosphoinositides function as signaling molecules and play a key role in vesicle trafficking in eukaryotic cells. Mutations in this gene have been associated with Charcot-Marie-Tooth disease, type 4J. [provided by RefSeq]

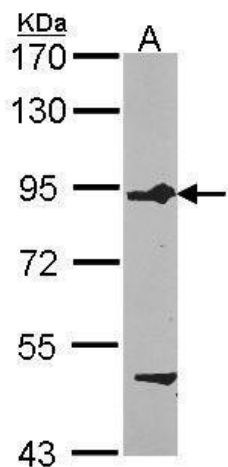


[View online »](#)

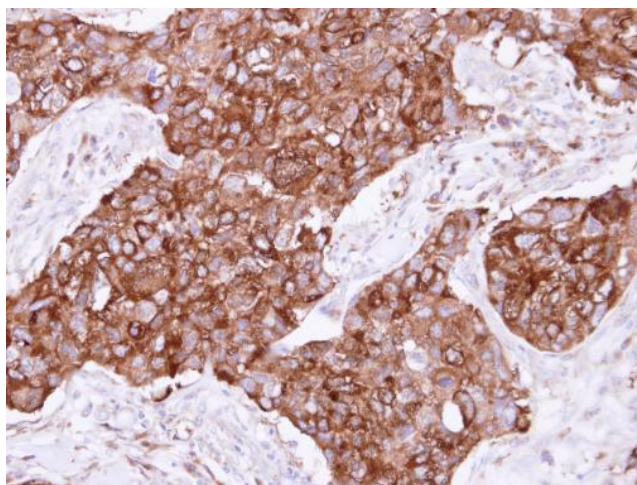
**Synonyms:** ALS11; BTOP; CMT4J; dj249I4.1; KIAA0274; SAC3; YVS

**Note:** Seq homology of immunogen across species: Chimpanzee (100%)

**Product images:**



Sample (30 ug of whole cell lysate). A: HCT116. 7.5% SDS PAGE. TA308985 diluted at 1:1000.



Immunohistochemical analysis of paraffin-embedded Breast ca, using FIG4 (TA308985) antibody at 1:500 dilution.

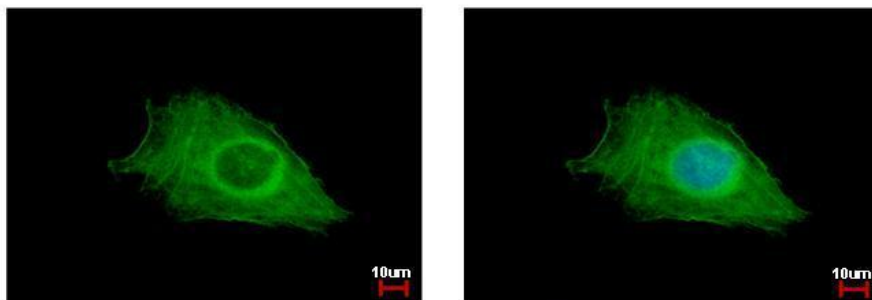


FIG4 antibody detects FIG4 protein at cytoplasm by immunofluorescent analysis. Sample: HeLa cells were fixed in ice-cold MeOH for 5 min. Green: FIG4 protein stained by FIG4 antibody (TA308985) diluted at 1:500. Blue: Hoechst 33342 staining.