

Product datasheet for **TA308983**

RASSF2 Rabbit Polyclonal Antibody

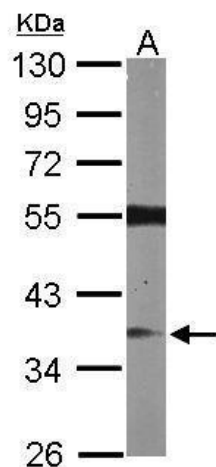
Product data:

Product Type:	Primary Antibodies
Applications:	IF, WB
Recommended Dilution:	ICC/IF:1:100-1:1000; WB:1:500-1:3000
Reactivity:	Human, Mouse (Predicted: Chicken, Rat)
Host:	Rabbit
Isotype:	IgG
Clonality:	Polyclonal
Immunogen:	Recombinant fragment corresponding to a region within amino acids 1 and 293 of RASSF2 (Uniprot ID#P50749)
Formulation:	0.1M Tris, 0.1M Glycine, 10% Glycerol (pH7). 0.01% Thimerosal was added as a preservative.
Concentration:	lot specific
Purification:	Purified by antigen-affinity chromatography.
Conjugation:	Unconjugated
Storage:	Store at -20°C as received.
Stability:	Stable for 12 months from date of receipt.
Predicted Protein Size:	38 kDa
Gene Name:	Ras association domain family member 2
Database Link:	NP_055552 Entrez Gene 215653 MouseEntrez Gene 311437 RatEntrez Gene 9770 Human P50749
Background:	This gene encodes a protein that contains a Ras association domain. Similar to its cattle and sheep counterparts, this gene is located near the prion gene. Two alternatively spliced transcripts encoding the same isoform have been reported. [provided by RefSeq]
Synonyms:	CENP-34; RASFADIN
Note:	Seq homology of immunogen across species: Chicken (82%), Rat (94%)

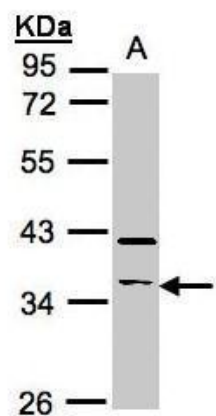


[View online »](#)

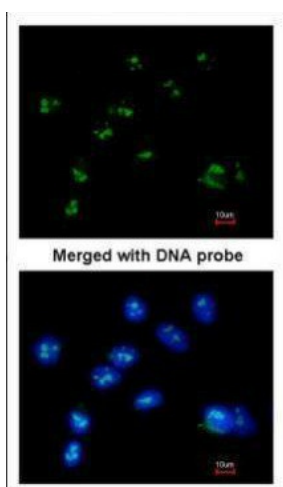
Product images:



Sample (50 ug of whole cell lysate). A: Mouse brain. 10% SDS PAGE. TA308983 diluted at 1:1000.



Sample (30 ug whole cell lysate). A:Raji. 10% SDS PAGE. TA308983 diluted at 1:500



Immunofluorescence analysis of paraformaldehyde-fixed A549, using RASSF2 (TA308983) antibody at 1:200 dilution.