

Product datasheet for **TA308982**

Malectin (MLEC) Rabbit Polyclonal Antibody

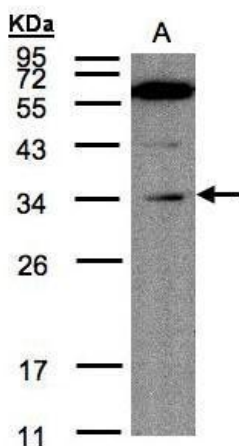
Product data:

Product Type:	Primary Antibodies
Applications:	IHC, WB
Recommended Dilution:	IHC:1:100-1:1000; WB:1:100-1:1000
Reactivity:	Human
Host:	Rabbit
Isotype:	IgG
Clonality:	Polyclonal
Immunogen:	Recombinant fragment corresponding to a region within amino acids 106 and 292 of Malectin (Uniprot ID#Q14165)
Formulation:	0.1M Tris, 0.1M Glycine, 10% Glycerol (pH7). 0.01% Thimerosal was added as a preservative.
Concentration:	lot specific
Purification:	Purified by antigen-affinity chromatography.
Conjugation:	Unconjugated
Storage:	Store at -20°C as received.
Stability:	Stable for 12 months from date of receipt.
Predicted Protein Size:	32 kDa
Gene Name:	malectin
Database Link:	NP_055545 Entrez Gene 9761 Human Q14165
Synonyms:	KIAA0152
Protein Families:	Transmembrane

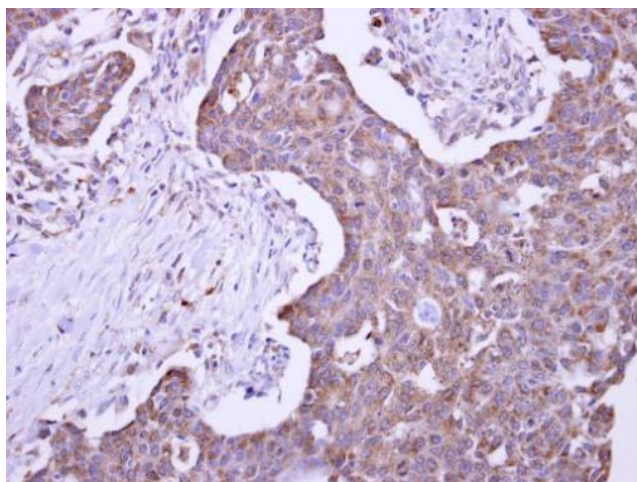


[View online »](#)

Product images:



Sample (30 ug of whole cell lysate). A:Raji. 12% SDS PAGE. TA308982 diluted at 1:200



Malectin antibody detects KIAA0152 protein at cytosol on Colon Carcinoma by immunohistochemical analysis. Sample: Paraffin-embedded Colon Carcinoma. Malectin antibody (TA308982) dilution: 1:500.