

Product datasheet for **TA308981**

ADAMTSL2 Rabbit Polyclonal Antibody

Product data:

Product Type:	Primary Antibodies
Applications:	IHC, WB
Recommended Dilution:	IHC:1:100-1:1000; WB:1:500-1:3000
Reactivity:	Human (Predicted: Mouse, Bovine)
Host:	Rabbit
Isotype:	IgG
Clonality:	Polyclonal
Immunogen:	Recombinant fragment corresponding to a region within amino acids 796 and 951 of ADAMTSL-2 (Uniprot ID#Q86TH1)
Formulation:	0.1M Tris, 0.1M Glycine, 10% Glycerol (pH7). 0.01% Thimerosal was added as a preservative.
Concentration:	lot specific
Purification:	Purified by antigen-affinity chromatography.
Conjugation:	Unconjugated
Storage:	Store at -20°C as received.
Stability:	Stable for 12 months from date of receipt.
Predicted Protein Size:	105 kDa
Gene Name:	ADAMTS like 2
Database Link:	NP_001138792 Entrez Gene 77794 Mouse Entrez Gene 9719 Human Q86TH1



[View online »](#)

Background:

This gene encodes a member of the ADAMTS (a disintegrin and metalloproteinase with thrombospondin motifs) and ADAMTS-like protein family. Members of the family share several distinct protein modules, including a propeptide region, a metalloproteinase domain, a disintegrin-like domain, and a thrombospondin type 1 (TS) motif. Individual members of this family differ in the number of C-terminal TS motifs, and some have unique C-terminal domains. The protein encoded by this gene lacks the protease domain, and is therefore of a member of the the ADAMTS-like protein subfamily. It is a secreted glycoprotein that binds the cell surface and extracellular matrix; it also interacts with latent transforming growth factor beta binding protein 1. Mutations in this gene have been associated with geleophysic dysplasia. [provided by RefSeq]

Synonyms:

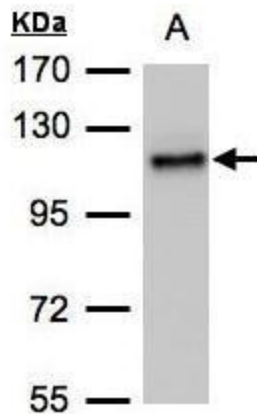
GPHYSD1

Note:

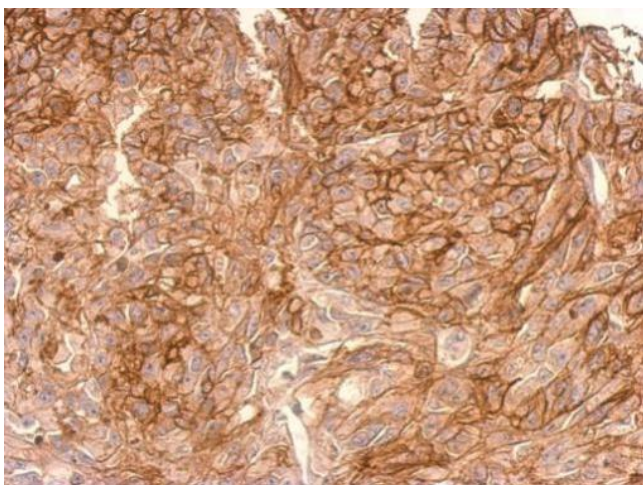
Seq homology of immunogen across species: Mouse (100%), Bovine (100%)

Protein Families:

Secreted Protein

Product images:

Sample (30 ug of whole cell lysate). A:H1299.
7.5% SDS PAGE. TA308981 diluted at 1:500



ADAMTSL2 antibody [C3], C-term detects ADAMTSL2 protein at cytosol (secreted) on SkHep1 xenograft by immunohistochemical analysis. Sample: Paraffin-embedded SkHep1 xenograft. ADAMTSL2 antibody [C3], C-term (TA308981) dilution: 1:500.