

Product datasheet for **TA308979**

TMEM59 Rabbit Polyclonal Antibody

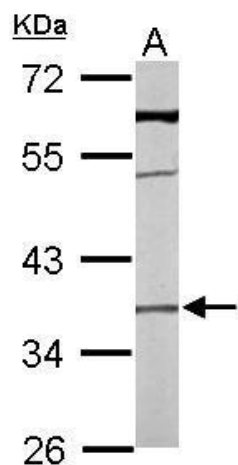
Product data:

Product Type:	Primary Antibodies
Applications:	IHC, WB
Recommended Dilution:	IHC:1:100-1:1000; WB:1:500-1:3000
Reactivity:	Human, Mouse (Predicted: Chimpanzee)
Host:	Rabbit
Isotype:	IgG
Clonality:	Polyclonal
Immunogen:	Recombinant fragment corresponding to a region within amino acids 16 and 311 of TMEM59 (Uniprot ID#Q9BXS4)
Formulation:	0.1M Tris, 0.1M Glycine, 10% Glycerol (pH7). 0.01% Thimerosal was added as a preservative.
Concentration:	lot specific
Purification:	Purified by antigen-affinity chromatography.
Conjugation:	Unconjugated
Storage:	Store at -20°C as received.
Stability:	Stable for 12 months from date of receipt.
Predicted Protein Size:	36 kDa
Gene Name:	transmembrane protein 59
Database Link:	NP_004863 Entrez Gene 56374 Mouse Entrez Gene 9528 Human Q9BXS4
Synonyms:	C1orf8; DCF1; HSPC001; PRO195; UNQ169
Note:	Seq homology of immunogen across species: Chimpanzee (100%)
Protein Families:	Transmembrane

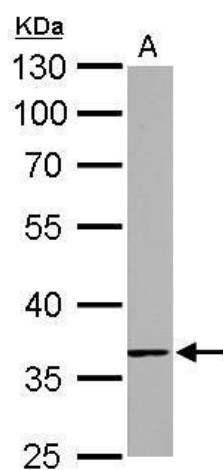


[View online »](#)

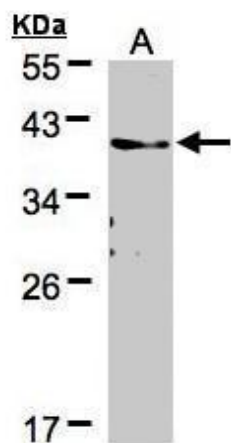
Product images:



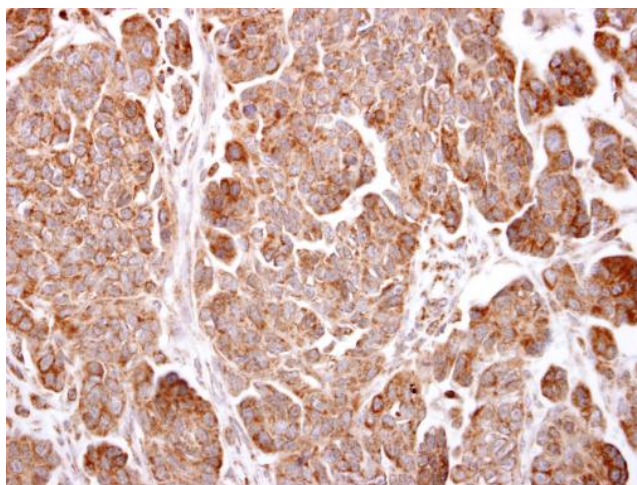
Sample (50 ug of whole cell lysate). A: mouse liver. 10% SDS PAGE. TA308979 diluted at 1:1000.



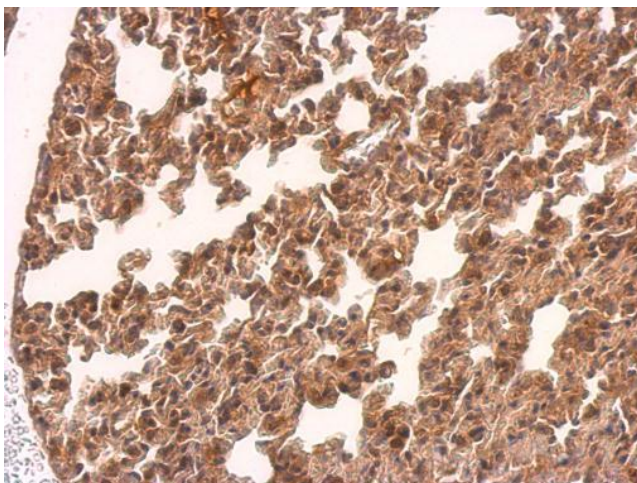
TMEM59 antibody detects TMEM59 protein by Western blot analysis. A. 50 ug rat kidney lysate/extract. 10 % SDS-PAGE. TMEM59 antibody (TA308979) dilution: 1:1000



Sample (30 ug of whole cell lysate). A:A431. 12% SDS PAGE. TA308979 diluted at 1:500



TMEM59 antibody detects TMEM59 protein at cytosol on human ovarian carcinoma by immunohistochemical analysis. Sample: Paraffin-embedded human ovarian carcinoma. TMEM59 antibody (TA308979) dilution: 1:500.



TMEM59 antibody detects TMEM59 protein at on mouse lung by immunohistochemical analysis. Sample: Paraffin-embedded mouse lung. TMEM59 antibody (TA308979) dilution: 1:500.