

Product datasheet for **TA308977**

AP1S2 Rabbit Polyclonal Antibody

Product data:

Product Type:	Primary Antibodies
Applications:	IF, WB
Recommended Dilution:	ICC/IF:1:100-1:1000; WB:1:500-1:3000
Reactivity:	Human (Predicted: Rat, Chimpanzee)
Host:	Rabbit
Isotype:	IgG
Clonality:	Polyclonal
Immunogen:	Recombinant fragment corresponding to a region within amino acids 1 and 157 of AP1S2 (Uniprot ID#P56377)
Formulation:	0.1M Tris, 0.1M Glycine, 10% Glycerol (pH7). 0.01% Thimerosal was added as a preservative.
Concentration:	lot specific
Purification:	Purified by antigen-affinity chromatography.
Conjugation:	Unconjugated
Storage:	Store at -20°C as received.
Stability:	Stable for 12 months from date of receipt.
Predicted Protein Size:	19 kDa
Gene Name:	adaptor related protein complex 1 sigma 2 subunit
Database Link:	NP_003907 Entrez Gene 302671 Rat Entrez Gene 8905 Human P56377
Background:	Adaptor protein complex 1 is found at the cytoplasmic face of coated vesicles located at the Golgi complex, where it mediates both the recruitment of clathrin to the membrane and the recognition of sorting signals within the cytosolic tails of transmembrane receptors. This complex is a heterotetramer composed of two large, one medium, and one small adaptin subunit. The protein encoded by this gene serves as the small subunit of this complex and is a member of the adaptin protein family. Transcript variants utilizing alternative polyadenylation signals exist for this gene. [provided by RefSeq]
Synonyms:	DC22; MRX59; MRXS5; MRXS21; MRXS21; MRXS21; MRXS21; PGS; SIGMA1B



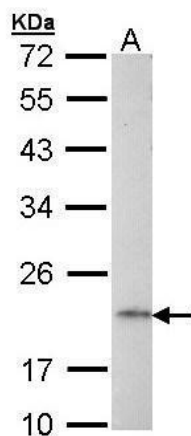
[View online »](#)

Note: Seq homology of immunogen across species: Rat (100%), Chimpanzee (100%)

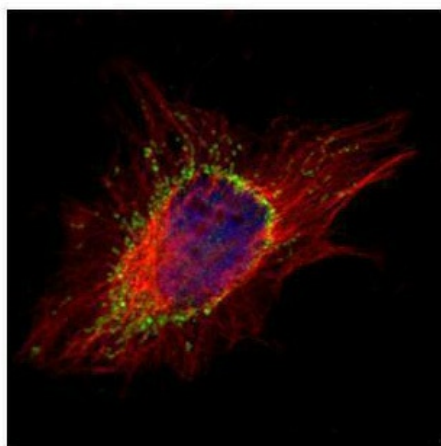
Protein Families: Druggable Genome

Protein Pathways: Lysosome

Product images:



Sample (30 ug of whole cell lysate). A: Raji. 12% SDS PAGE. TA308977 diluted at 1:1000.



Confocal immunofluorescence analysis (Olympus FV10i) of methanol-fixed HeLa, using AP1S2 (TA308977) antibody (Green) at 1:500 dilution. Alpha-tubulin filaments were labeled with anti-alpha tubulin antibody (Red) at 1:2000.