

Product datasheet for **TA308975**

SUCLA2 Rabbit Polyclonal Antibody

Product data:

Product Type:	Primary Antibodies
Applications:	IF, IHC, WB
Recommended Dilution:	ICC/IF:1:100-1:1000; IHC:1:100-1:1000; WB:1:1000-1:20000
Reactivity:	Human, Mouse (Predicted: Rat, Xenopus, Zebrafish, Bovine, X. tropicalis)
Host:	Rabbit
Isotype:	IgG
Clonality:	Polyclonal
Immunogen:	Recombinant fragment corresponding to a region within amino acids 138 and 416 of SUCLA2 (Uniprot ID#Q9P2R7)
Formulation:	0.1M Tris, 0.1M Glycine, 10% Glycerol (pH7). 0.01% Thimerosal was added as a preservative.
Concentration:	lot specific
Purification:	Purified by antigen-affinity chromatography.
Conjugation:	Unconjugated
Storage:	Store at -20°C as received.
Stability:	Stable for 12 months from date of receipt.
Predicted Protein Size:	50 kDa
Gene Name:	succinate-CoA ligase ADP-forming beta subunit
Database Link:	NP_003841 Entrez Gene 20916 Mouse Entrez Gene 361071 Rat Entrez Gene 8803 Human Q9P2R7
Background:	Succinyl-CoA synthetase (SCS) is a mitochondrial matrix enzyme that acts as a heterodimer, being composed of an invariant alpha subunit and a substrate-specific beta subunit. The protein encoded by this gene is an ATP-specific SCS beta subunit that dimerizes with the SCS alpha subunit to form SCS-A, an essential component of the tricarboxylic acid cycle. SCS-A hydrolyzes ATP to convert succinate to succinyl-CoA. Defects in this gene are a cause of myopathic mitochondrial DNA depletion syndrome. A pseudogene of this gene has been found on chromosome 6. [provided by RefSeq]
Synonyms:	A-BETA; MTDP55; SCS-betaA

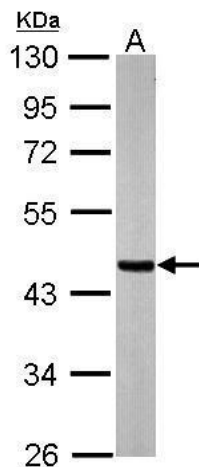


[View online »](#)

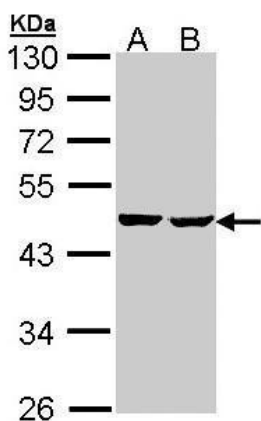
Note: Seq homology of immunogen across species: Rat (88%), Xenopus laevis (85%), Zebrafish (81%), Bovine (92%), Xenopus tropicalis (83%)

Protein Pathways: Citrate cycle (TCA cycle), Metabolic pathways, Propanoate metabolism

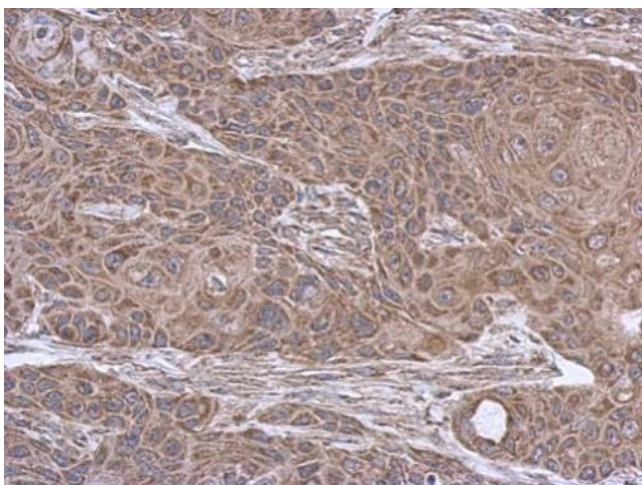
Product images:



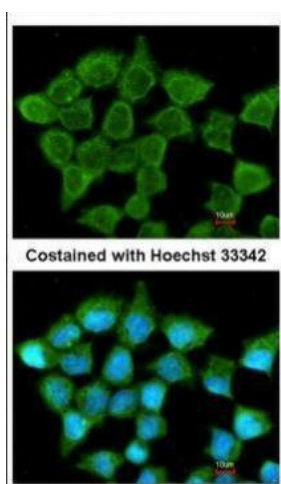
Sample (20 ug of whole cell lysate). A: mouse brain. 10% SDS PAGE. TA308975 diluted at 1:20000.



Sample (30 ug of whole cell lysate). A: Hep G2. B: Molt-4. 10% SDS PAGE. TA308975 diluted at 1:1000.



Immunohistochemical analysis of paraffin-embedded Cal27 xenograft, using SUCLA2 (TA308975) antibody at 1:500 dilution.



Immunofluorescence analysis of methanol-fixed A431, using SUCLA2 (TA308975) antibody at 1:200 dilution.