

Product datasheet for **TA308974**

SUCLG1 Rabbit Polyclonal Antibody

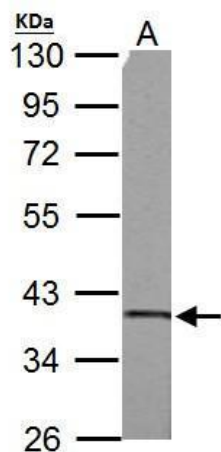
Product data:

Product Type:	Primary Antibodies
Applications:	IF, IHC, WB
Recommended Dilution:	ICC/IF:1:100-1:1000; IHC:1:100-1:1000; WB:1:1000-1:10000
Reactivity:	Human, Mouse
Host:	Rabbit
Isotype:	IgG
Clonality:	Polyclonal
Immunogen:	Recombinant fragment corresponding to a region within amino acids 1 and 346 of SUCLG1 (Uniprot ID#P53597)
Formulation:	0.1M Tris, 0.1M Glycine, 10% Glycerol (pH7). 0.01% Thimerosal was added as a preservative.
Concentration:	lot specific
Purification:	Purified by antigen-affinity chromatography.
Conjugation:	Unconjugated
Storage:	Store at -20°C as received.
Stability:	Stable for 12 months from date of receipt.
Predicted Protein Size:	36 kDa
Gene Name:	succinate-CoA ligase alpha subunit
Database Link:	NP_003840 Entrez Gene 56451 Mouse Entrez Gene 8802 Human P53597
Synonyms:	GALPHA; MTDPS9; SUCLA1
Protein Pathways:	Citrate cycle (TCA cycle), Metabolic pathways, Propanoate metabolism

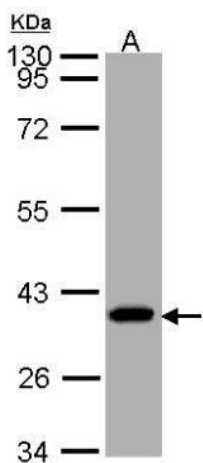


[View online »](#)

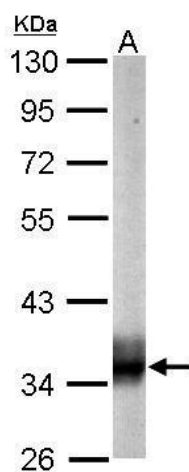
Product images:



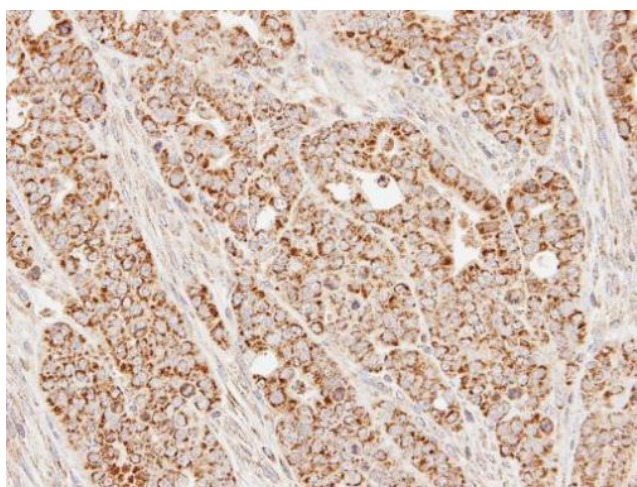
SUCLG1 antibody detects SUCLG1 protein by Western blot analysis. A: 50 ug rat brain lysate/extract. 10 % SDS-PAGE. SUCLG1 antibody (TA308974) dilution: 1:3000



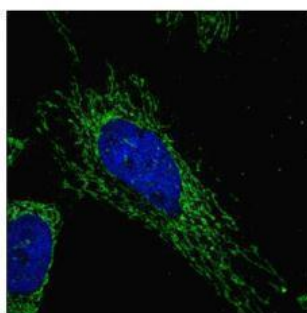
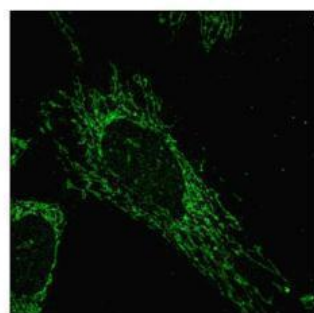
Sample (30 ug of whole cell lysate). A: A431. 10% SDS PAGE. TA308974 diluted at 1:1000



Sample (20 ug of whole cell lysate). A: mouse brain. 10% SDS PAGE. TA308974 diluted at 1:10000.



Immunohistochemical analysis of paraffin-embedded N87 xenograft, using SUCLG1 (TA308974) antibody at 1:100 dilution.



SUCLG1 antibody detects SUCLG1 protein at mitochondria by confocal immunofluorescent analysis. Sample: HeLa cells were fixed in 2% paraformaldehyde/culture medium at 37°C for 30min. Green: SUCLG1 protein stained by SUCLG1 antibody (TA308974) diluted at 1